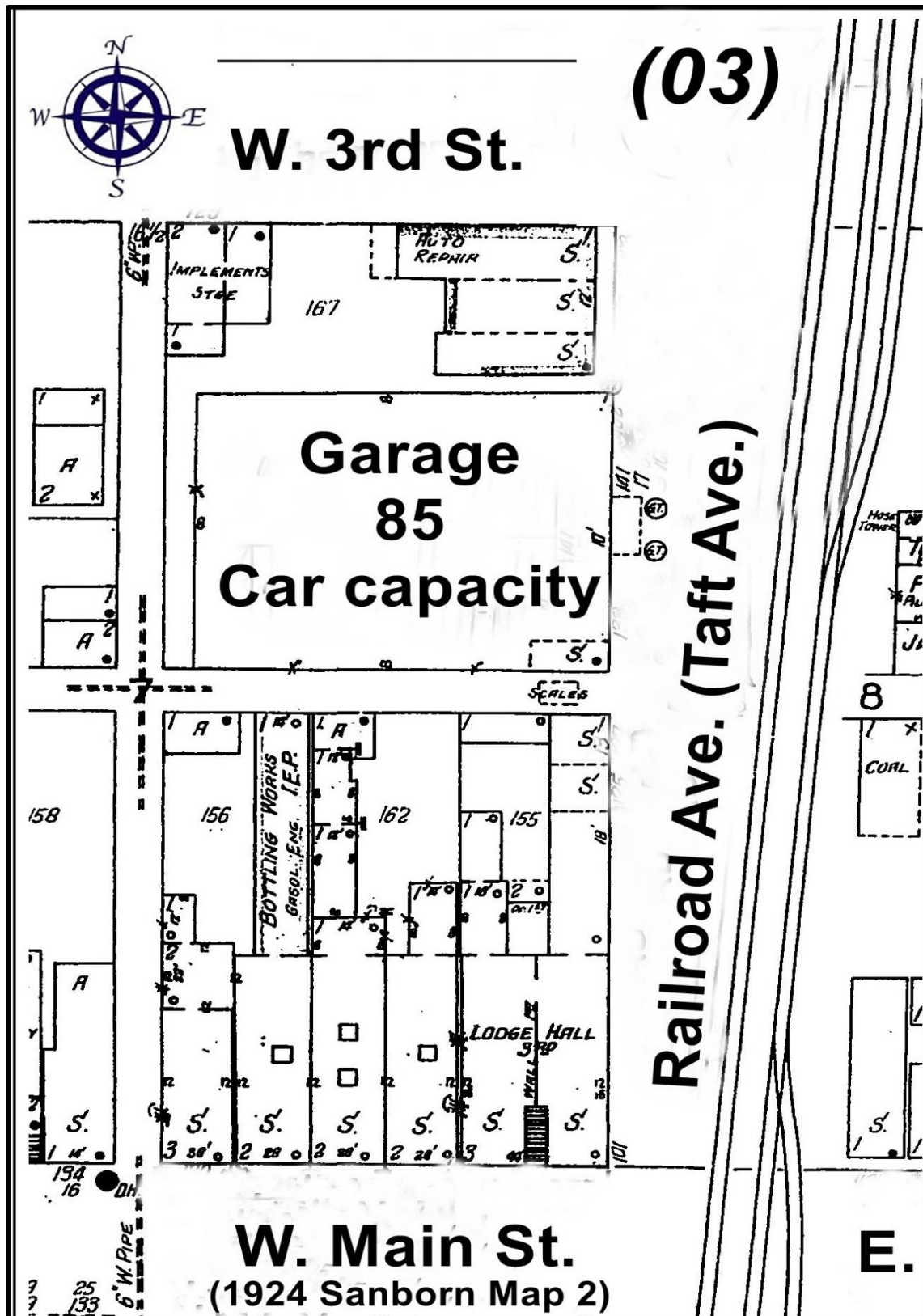
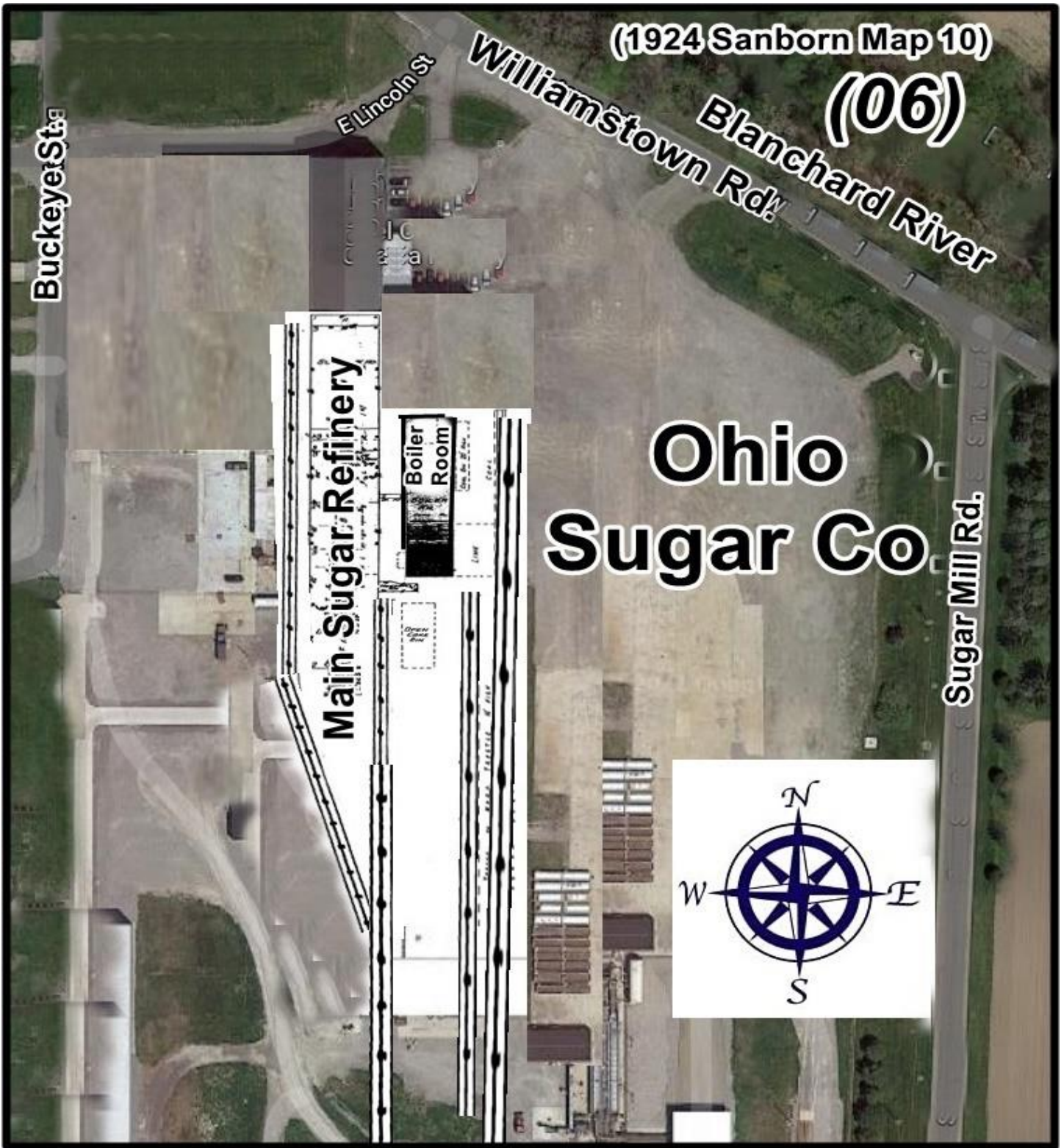


1 - Railroad Ave. (1 - 1924) Sites 1 - Taft Ave. (1 - 1924)
Site 1 - 1924 - MAP 2 - Car Garage (TAFT Ave.)



1 Site Williamstown Rd. (1 - 1924)

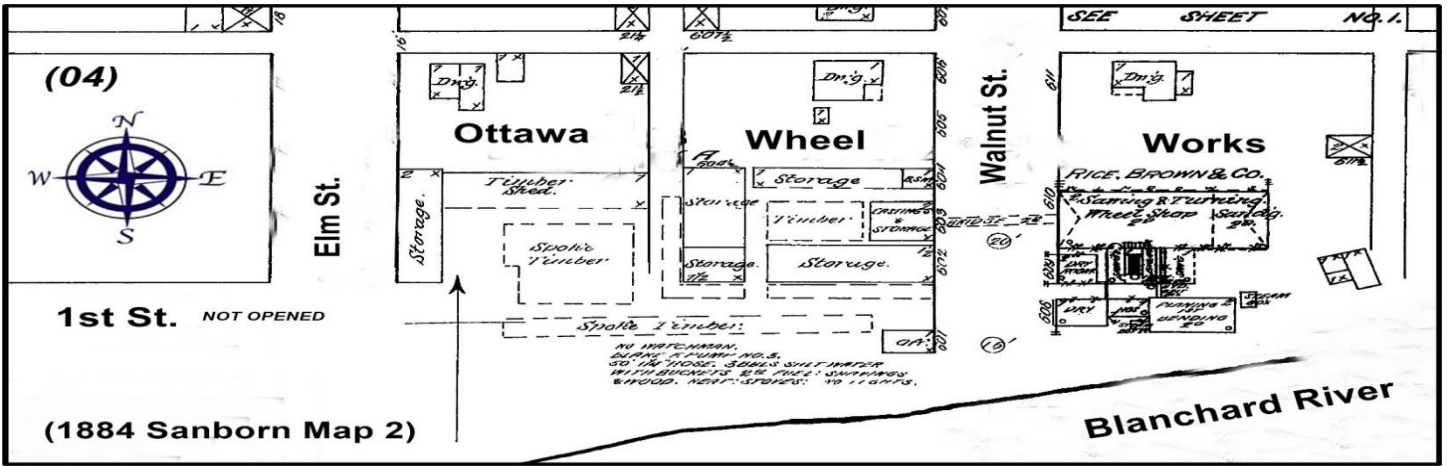
Site 1 - 1924 - Map 10 - Ohio Sugar Company



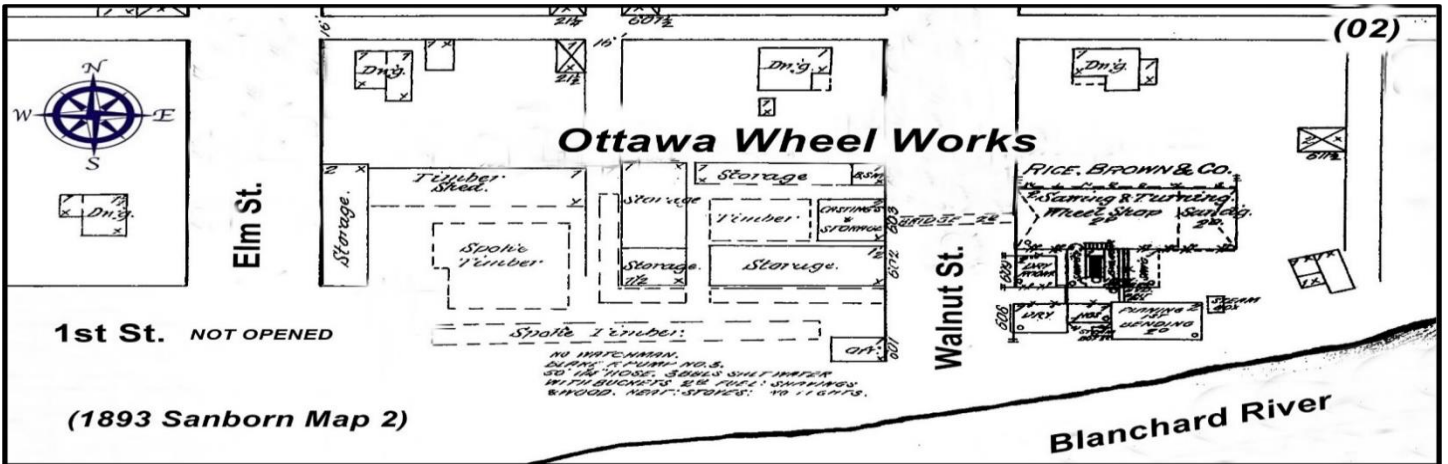
End of Williamstown Rd. Site

4 Sites Walnut St. (1 - 1884) (1 - 1893) (1 - 1900) (1 - 1924-1931)

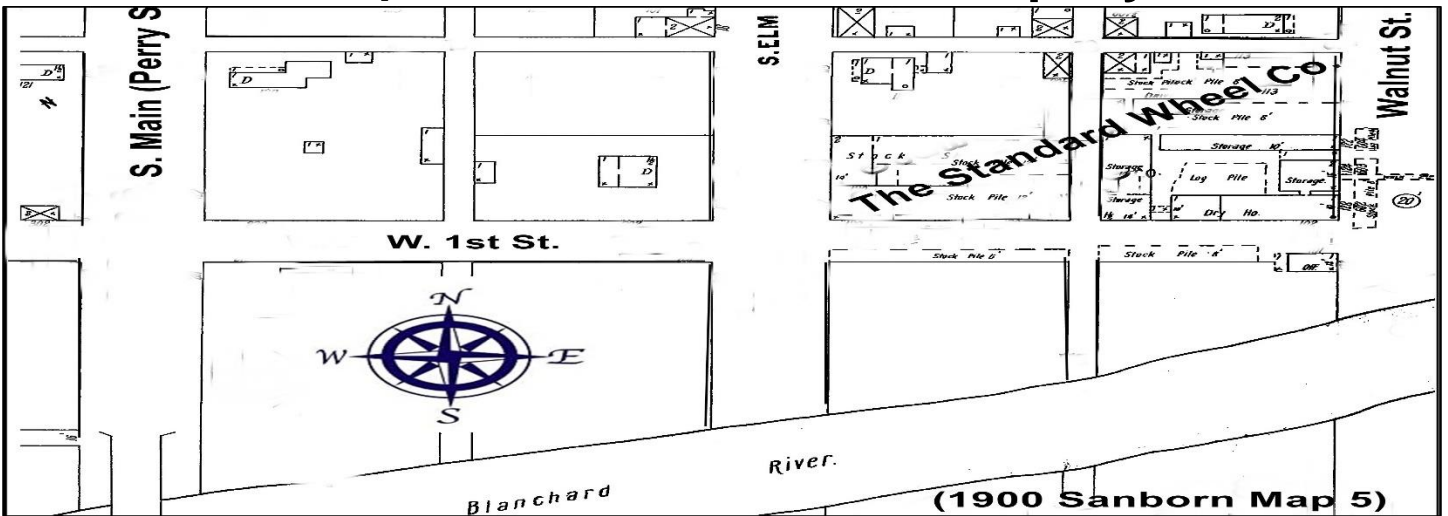
Site 1 - 1884 Map 2 - Ottawa Wheel Works



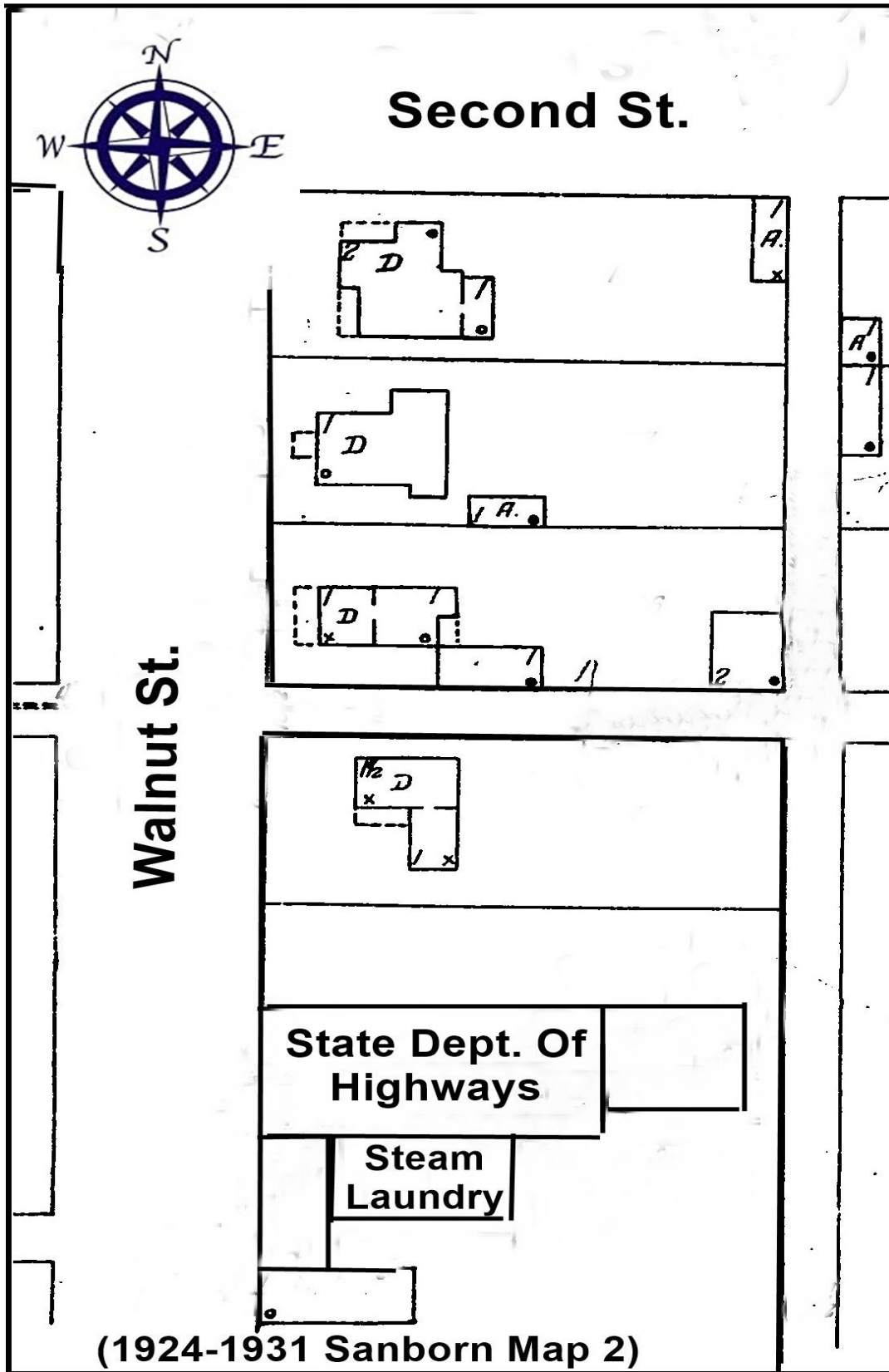
Site 2 - 1893 Map 2 - Ottawa Wheel Works



Site 3 - 1900 Map 5 - Standard Wheel Company



Site 4 - 1924-1931 Map 2 - State of Ohio Dept. of Highways



(1924-1931 Sanborn Map 2)

End of Walnut St. Site

3 Sites Locust St. (2 - 1924-1931)

Site 1 - 1924-1931 - Map 9 - Ottawa Union Stockyards

Site 2 - 1924-1931 - Map 9 - Johnson Oil Refinery Co.

Site 3 - 1924-1931 - Map 9 - Ottawa Garage, L. A. Labadie, owner

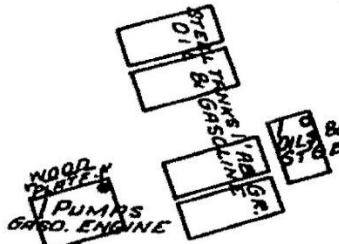
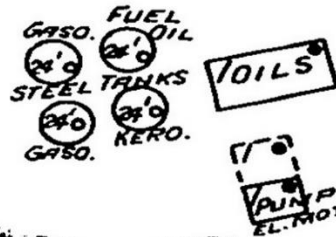
Map insets on the 1924-1931 Sanborn map makes it difficult to be sure of the Johnson Oil refinery Co. and the Ottawa Garage Locations. Johnson Oil could be to the south of Ottawa Garage and the wood fence next to Ottawa Union Stock Yard



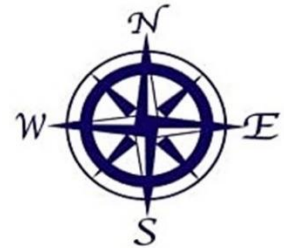
OTTAWA UNION STOCK YARDS

LIGHTS - ELECTRIC, HEAT - STOVE, IN OFF. CITY WATER, SMALL HYDS. & HOSE.

Johnson Oil Refinery Co.



OTTAWA GARAGE
L.A. LABADIE



(1924-1931 Sanborn Map 9 Inset)

End of Locust St. Site