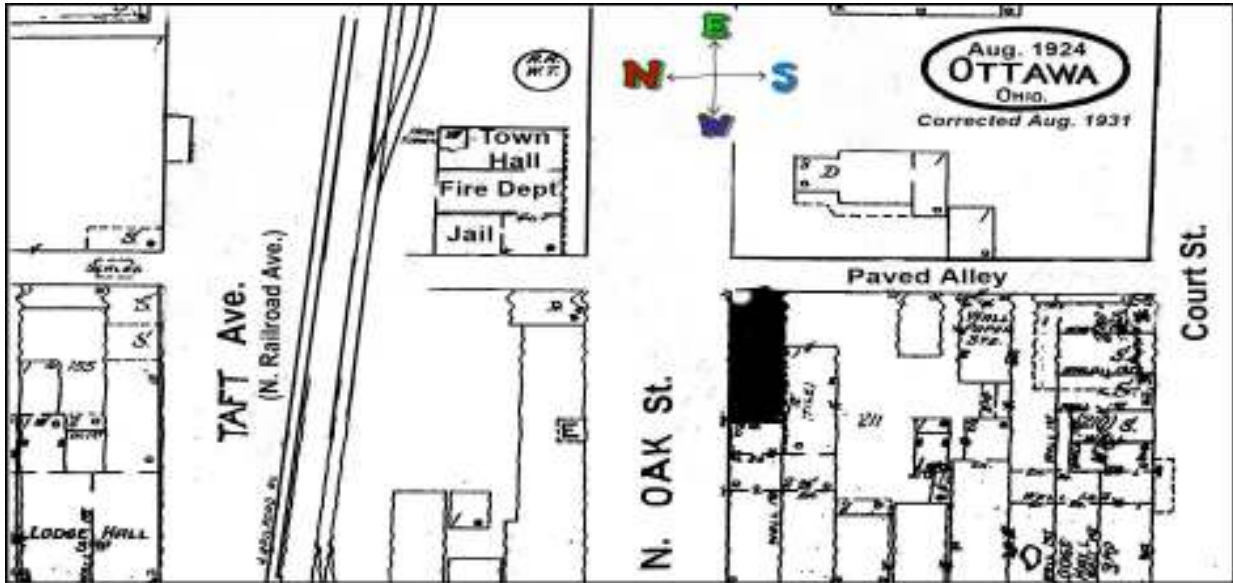


# 1931 Sanborn Maps - 30 Sites

## Site 1 - 1931 (Map 2 - N. Oak St.)

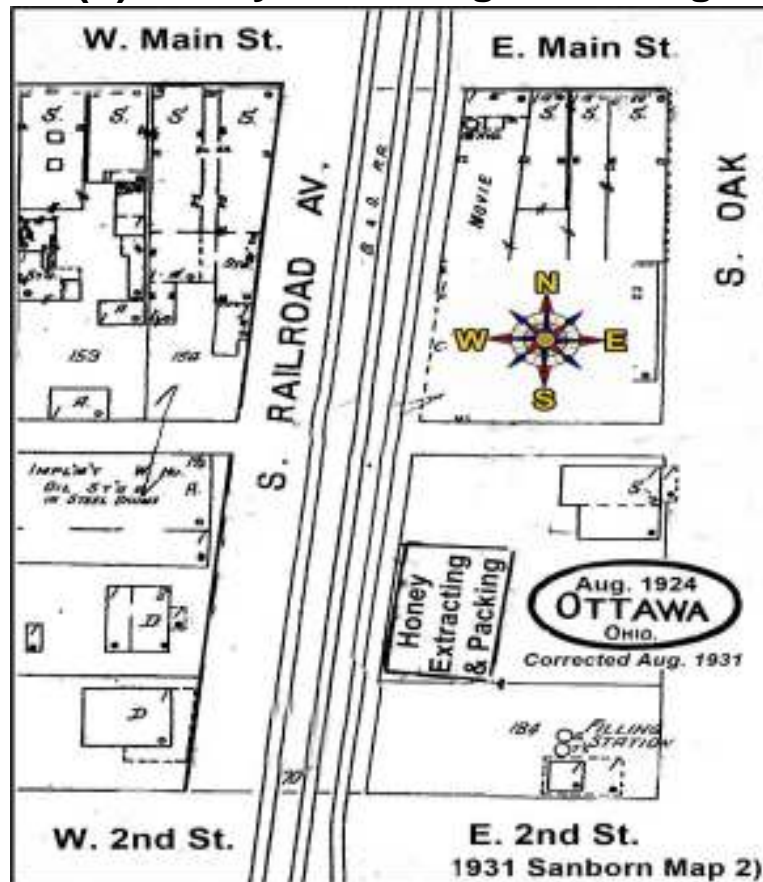
### (1) Town Hall - Fire Dept. - Jail



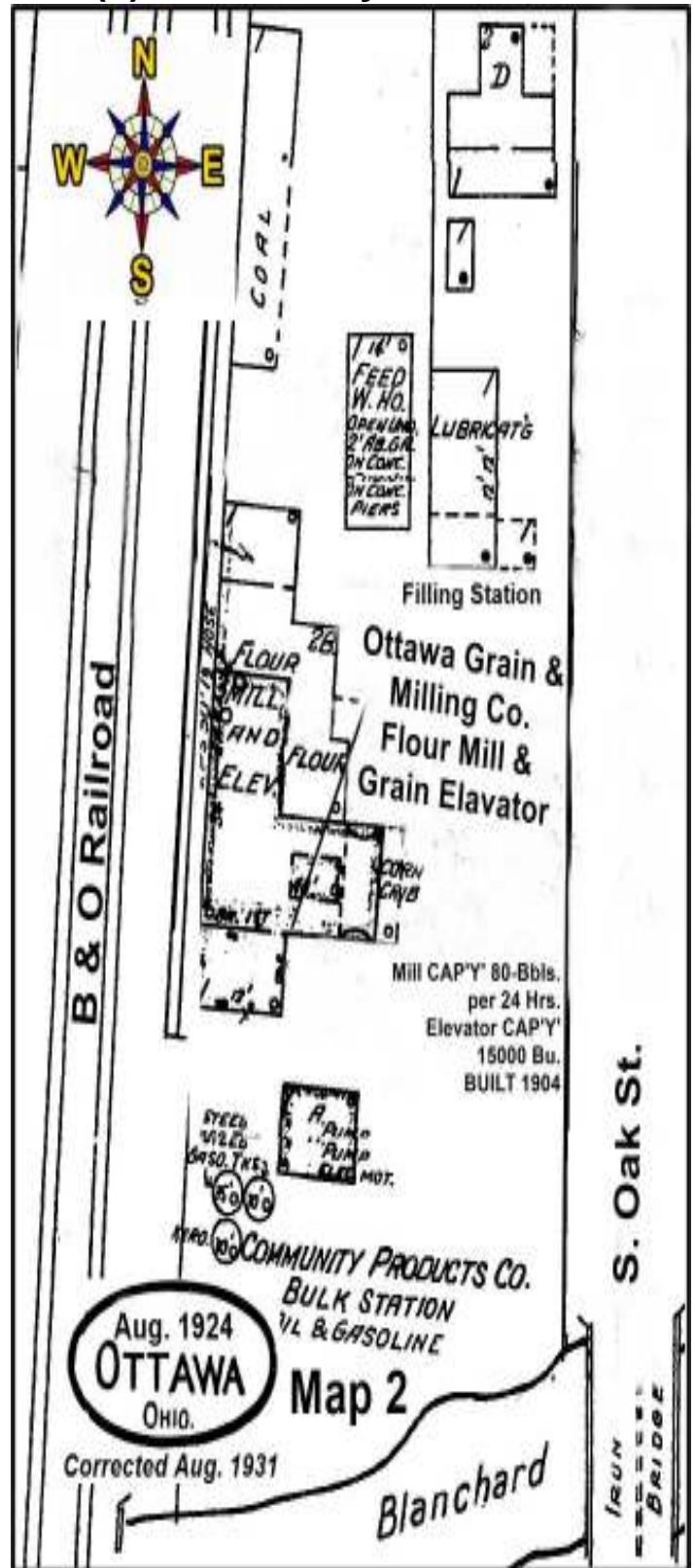
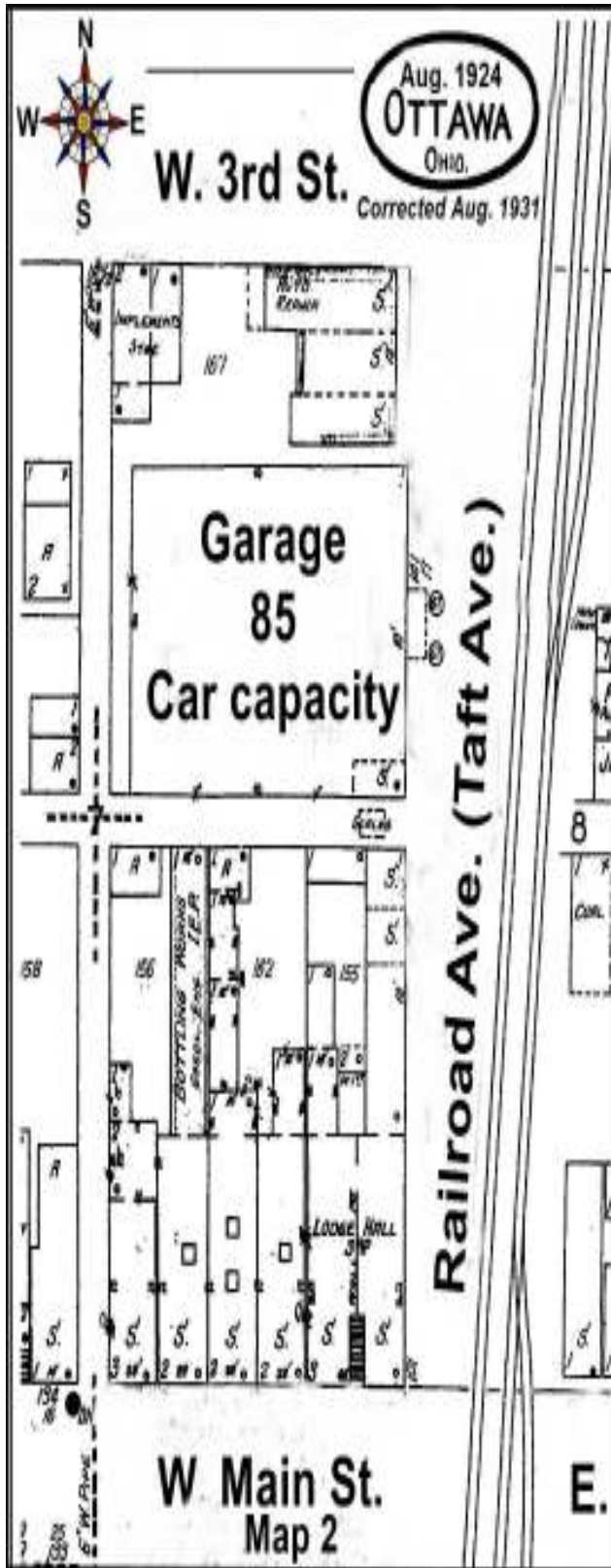
---

## Site 2 - 1931 (Map 2 - S. Oak St.)

### (2) Honey Extracting & Packing



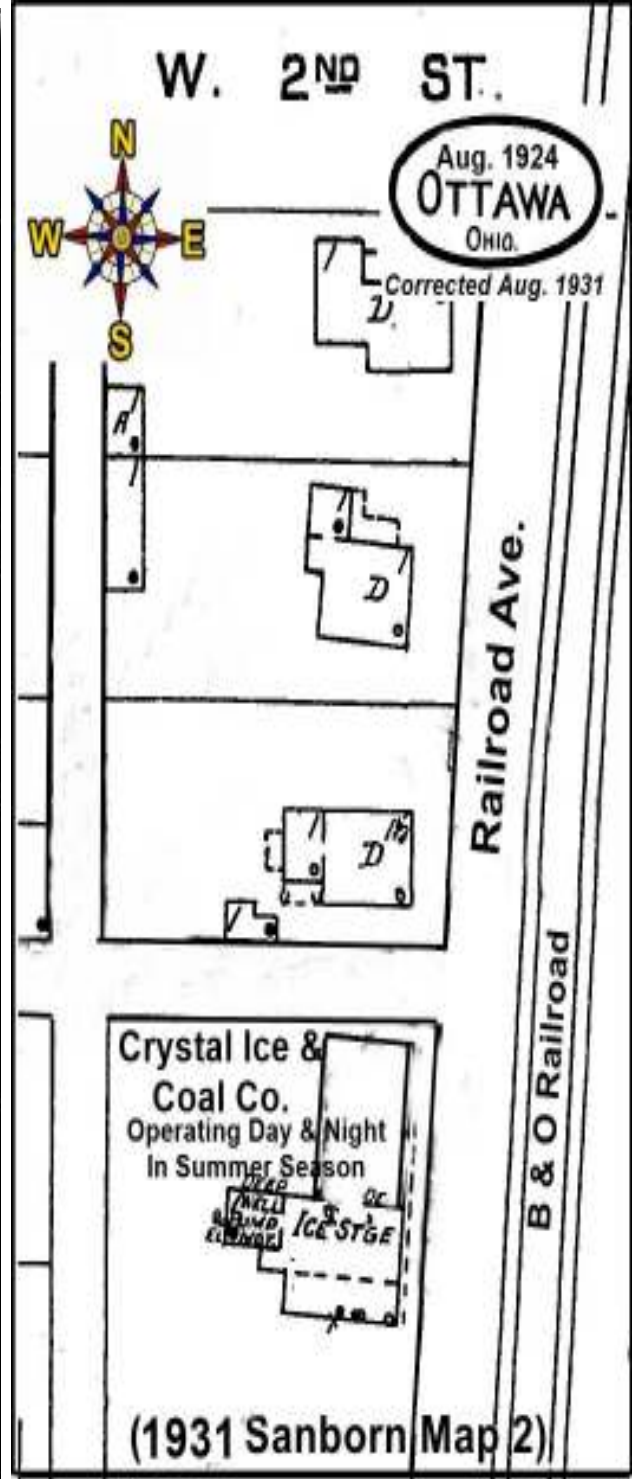
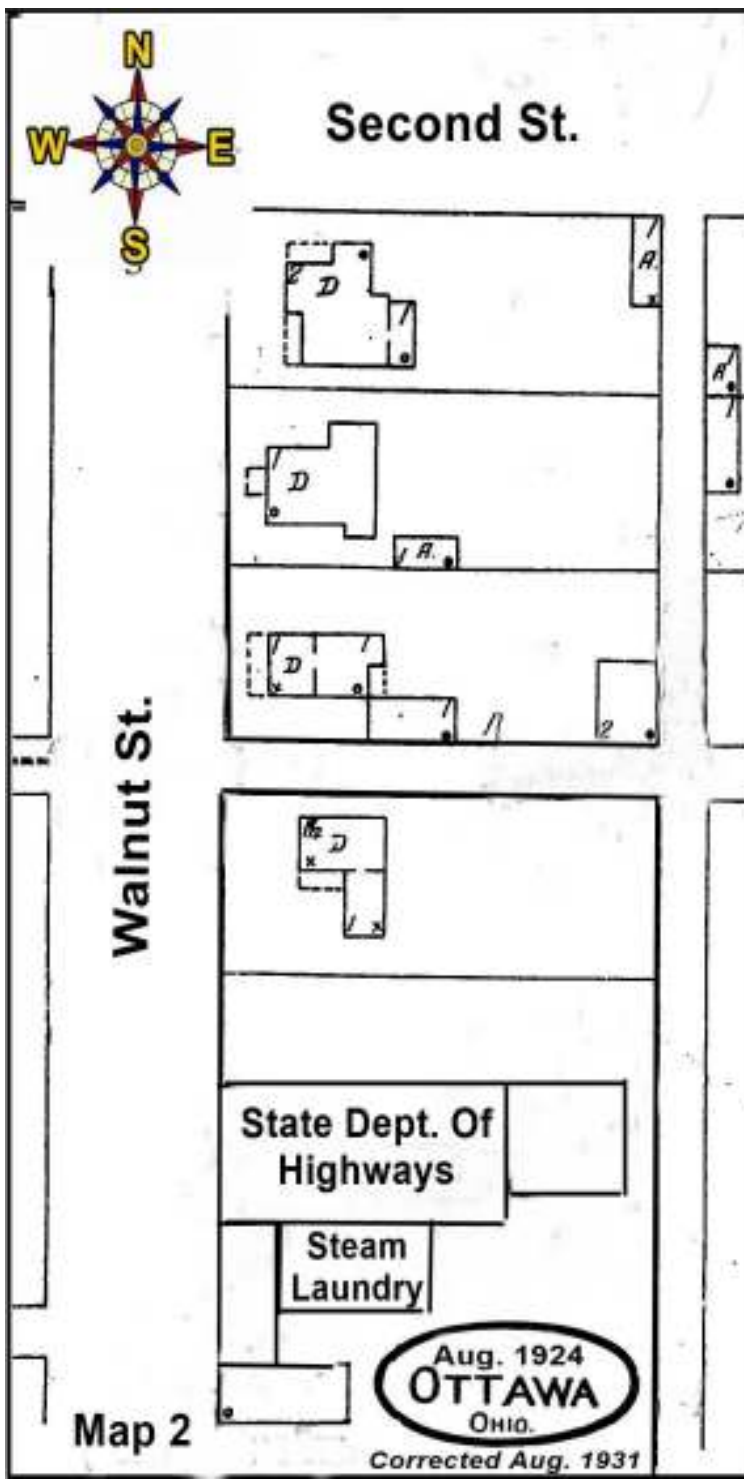
Site 3 - 1931 (Map 2 - S. Oak St.) \* Site 4, 5 - 1931 (Map 2 - S. Oak St.)  
 (3) Garage 85 Car Capacity (4) Ottawa Grain & Milling Co.  
 (5) Community Products Co.



Site 6 - 1931 (Map 2 - S. Oak St.) \* Site 7 - 1931 (Map 2 - S. Oak St.)

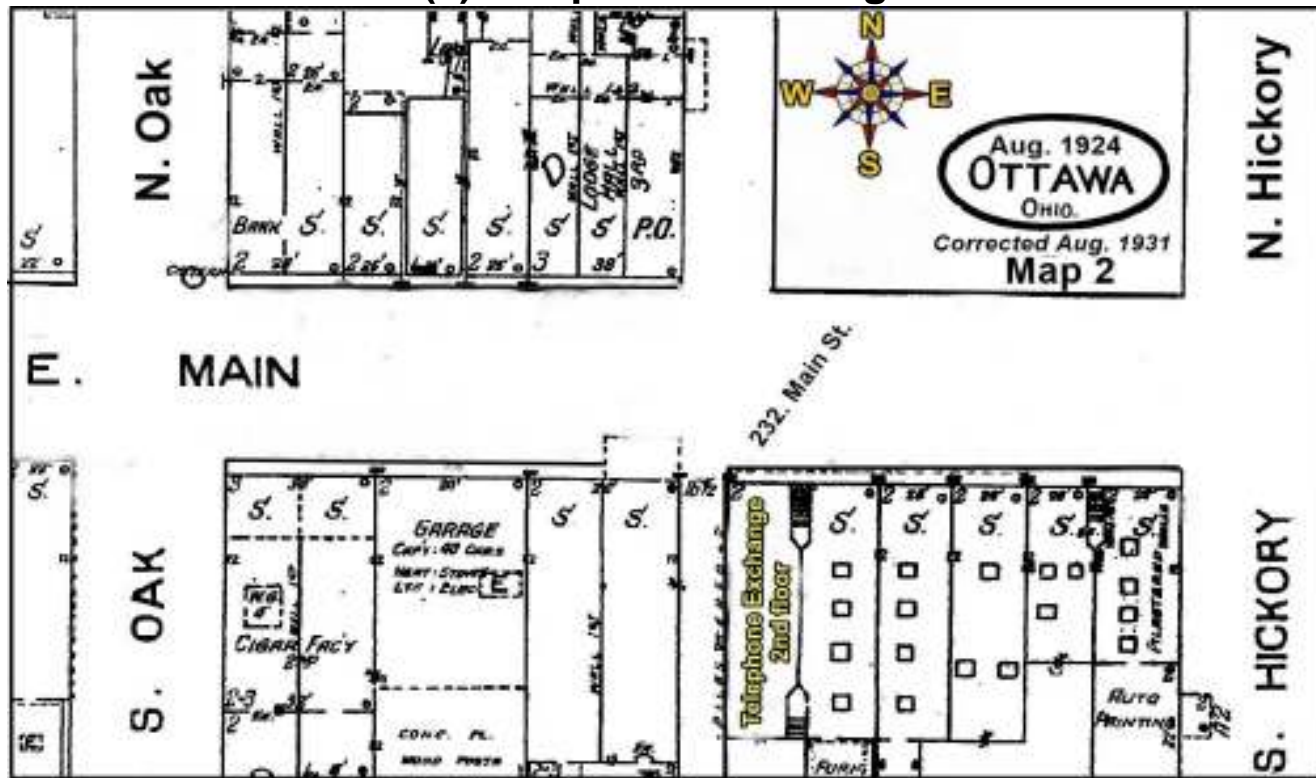
(6) State of Ohio Dept. of Highways

(7) Crystal Ice & Coal Co.



Site 8 - 1931 (Map 2 - E. Main St.)

(8) Telephone Exchange



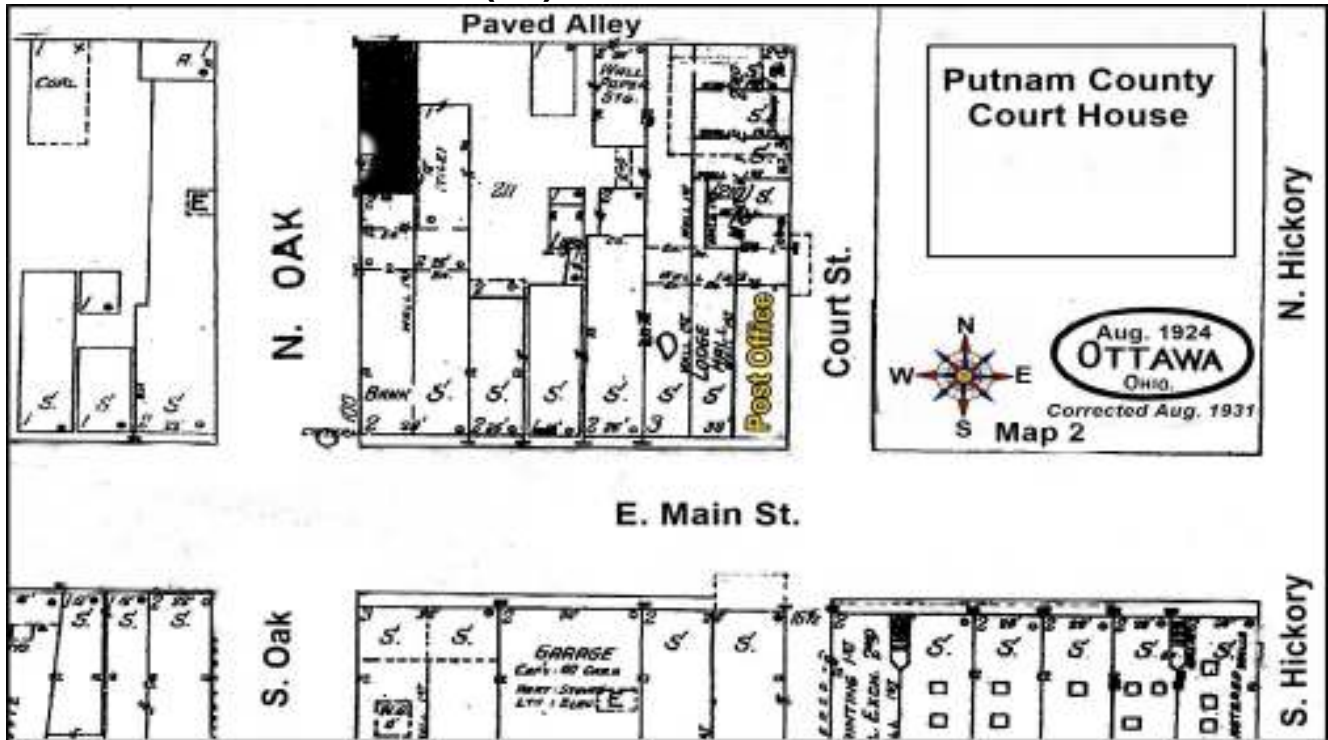
Site 9 - 1931 (Map 2 - W. Main St.)

(9) Telephone Exchange



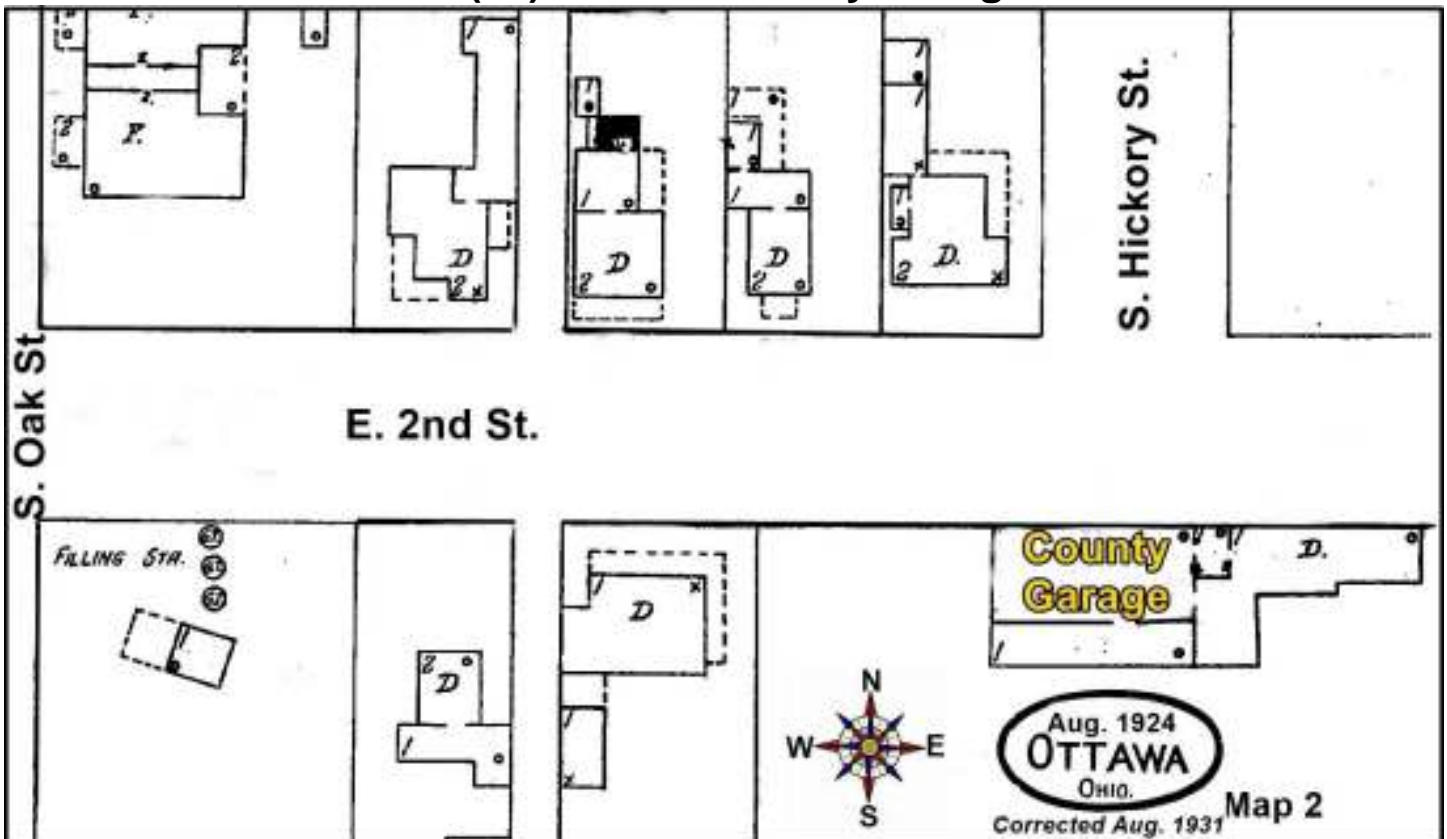
Site 10 - 1931 (Map 2 - E. Main St.)

(10) U. S. Post Office



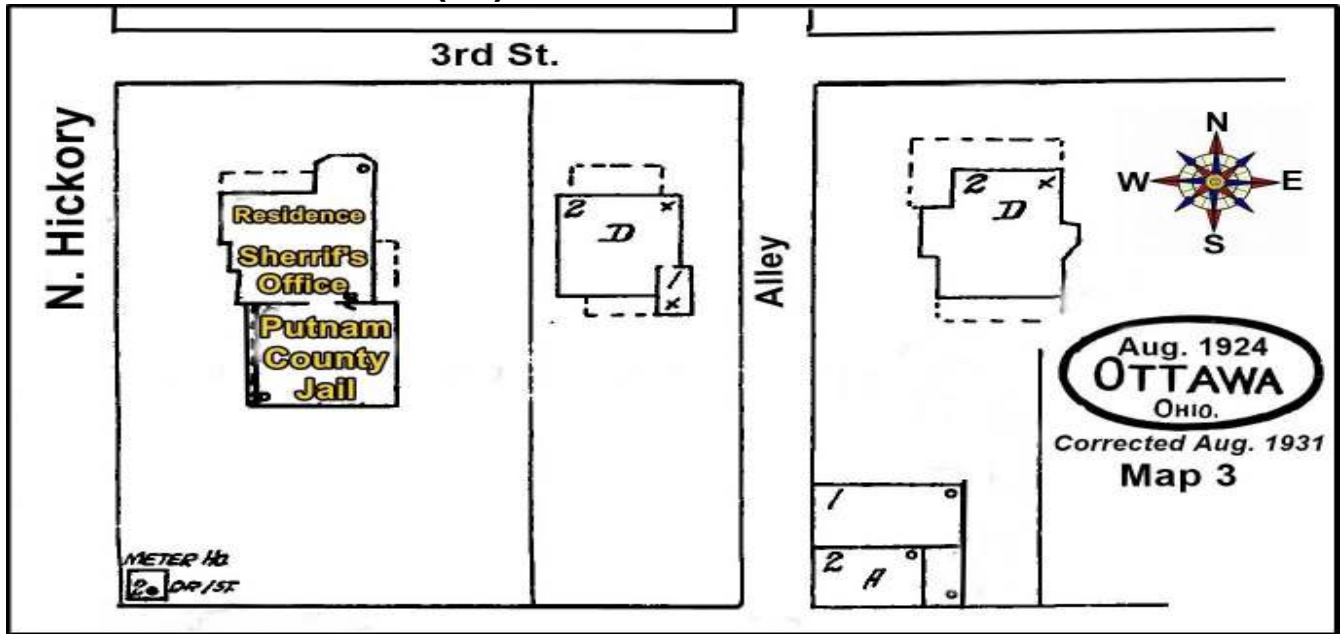
Site 11 - 1931 (Map 2 - E. 2nd St.)

(11) Putnam County Garage



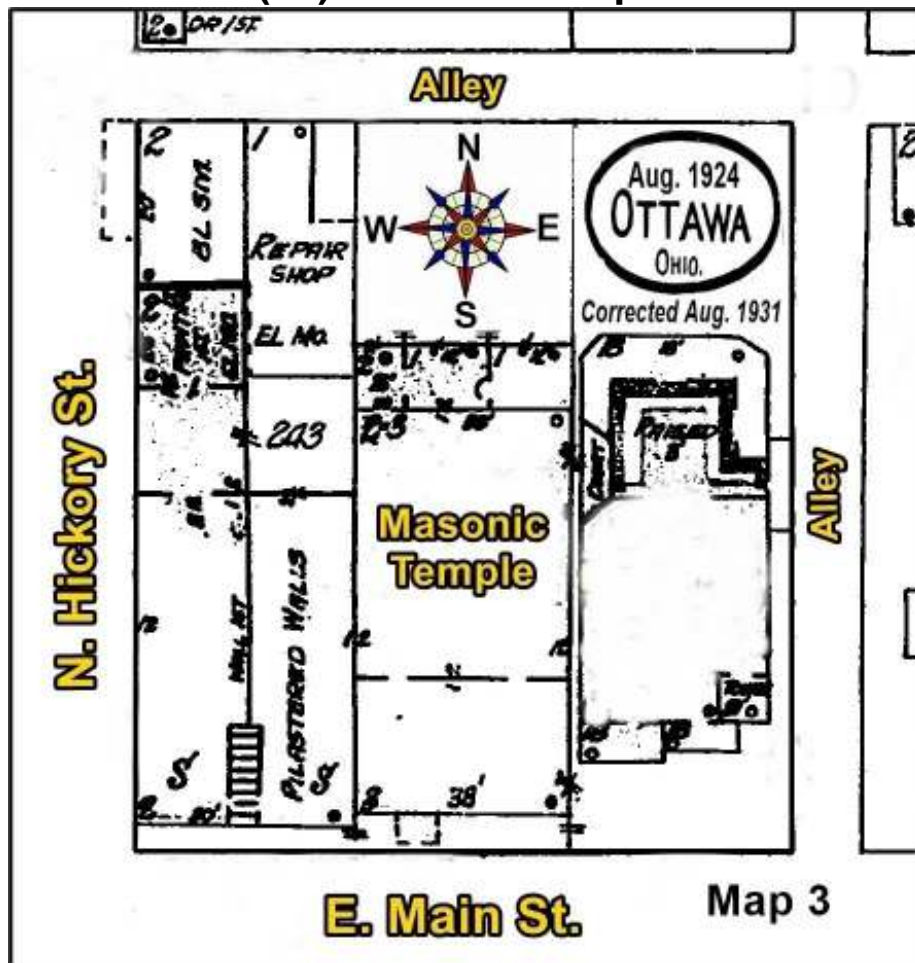
Site 12 - 1931 (Map 3 - N. Hickory St.)

(12) Sheriff Office & Jail



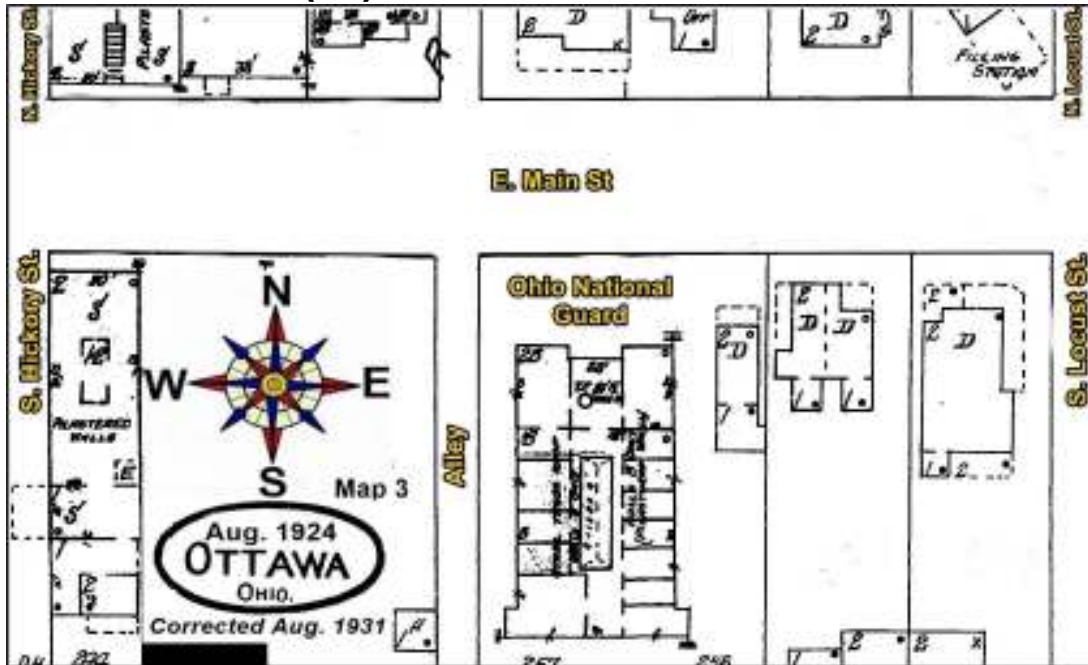
Site 13 - 1931 (Map 3 - E. Main St.)

(13) Masonic Temple



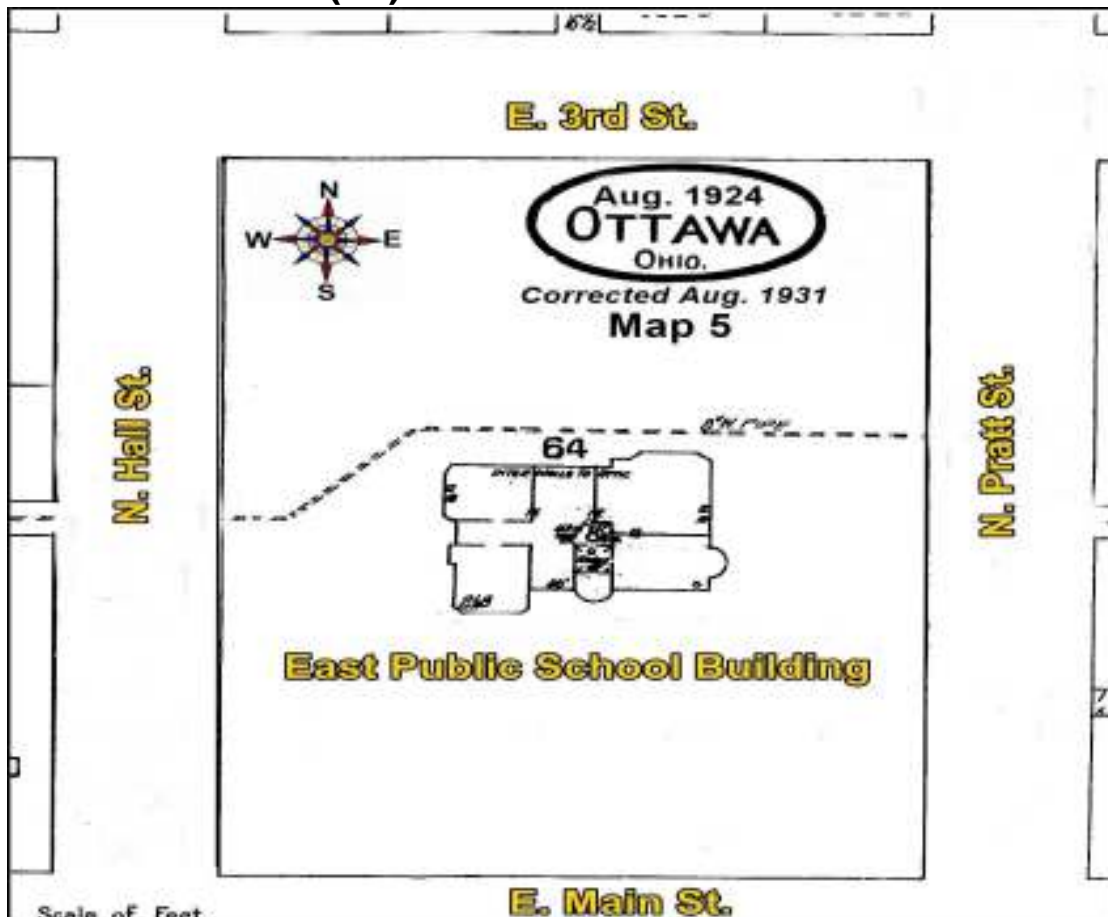
Site 14 - 1931 (Map 3 - E. Main St.)

(14) Ohio National Guard



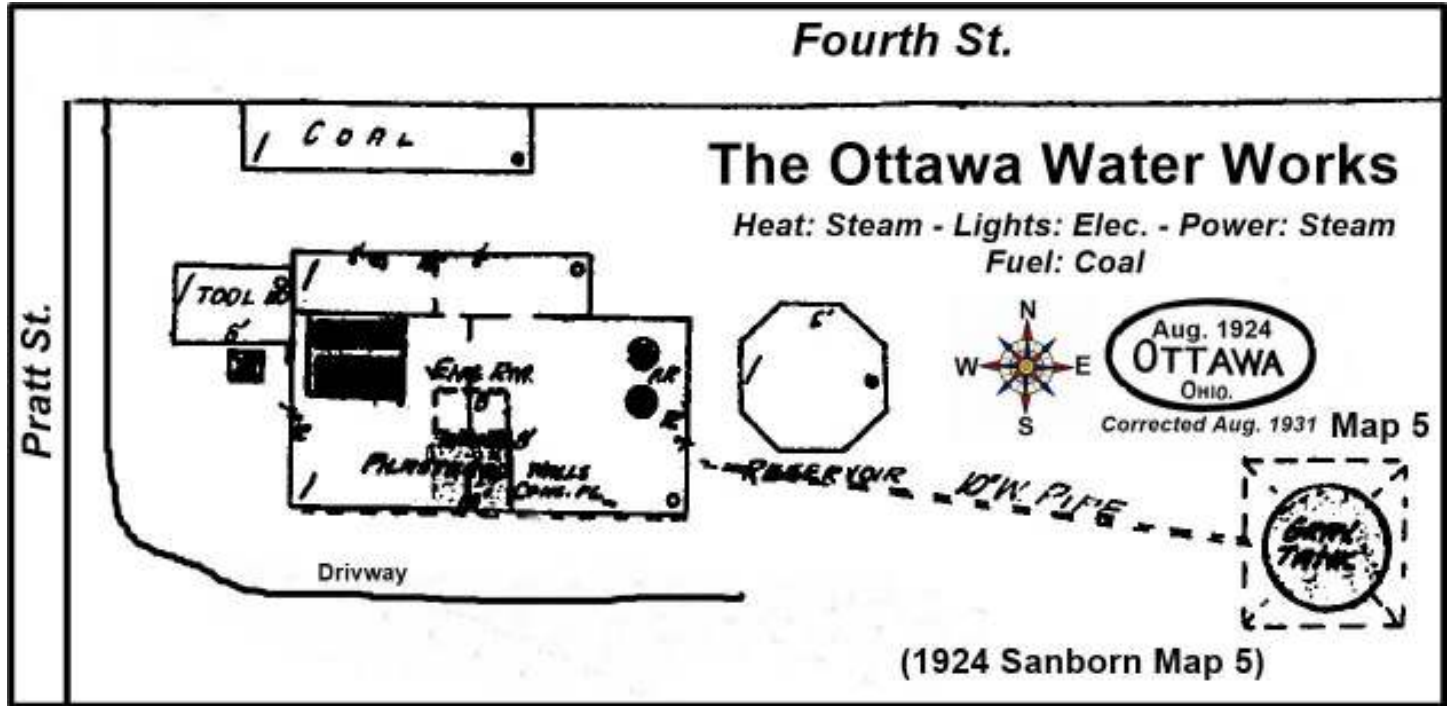
Site 15 - 1931 (Map 5 - E. Main St.)

(15) East Public School



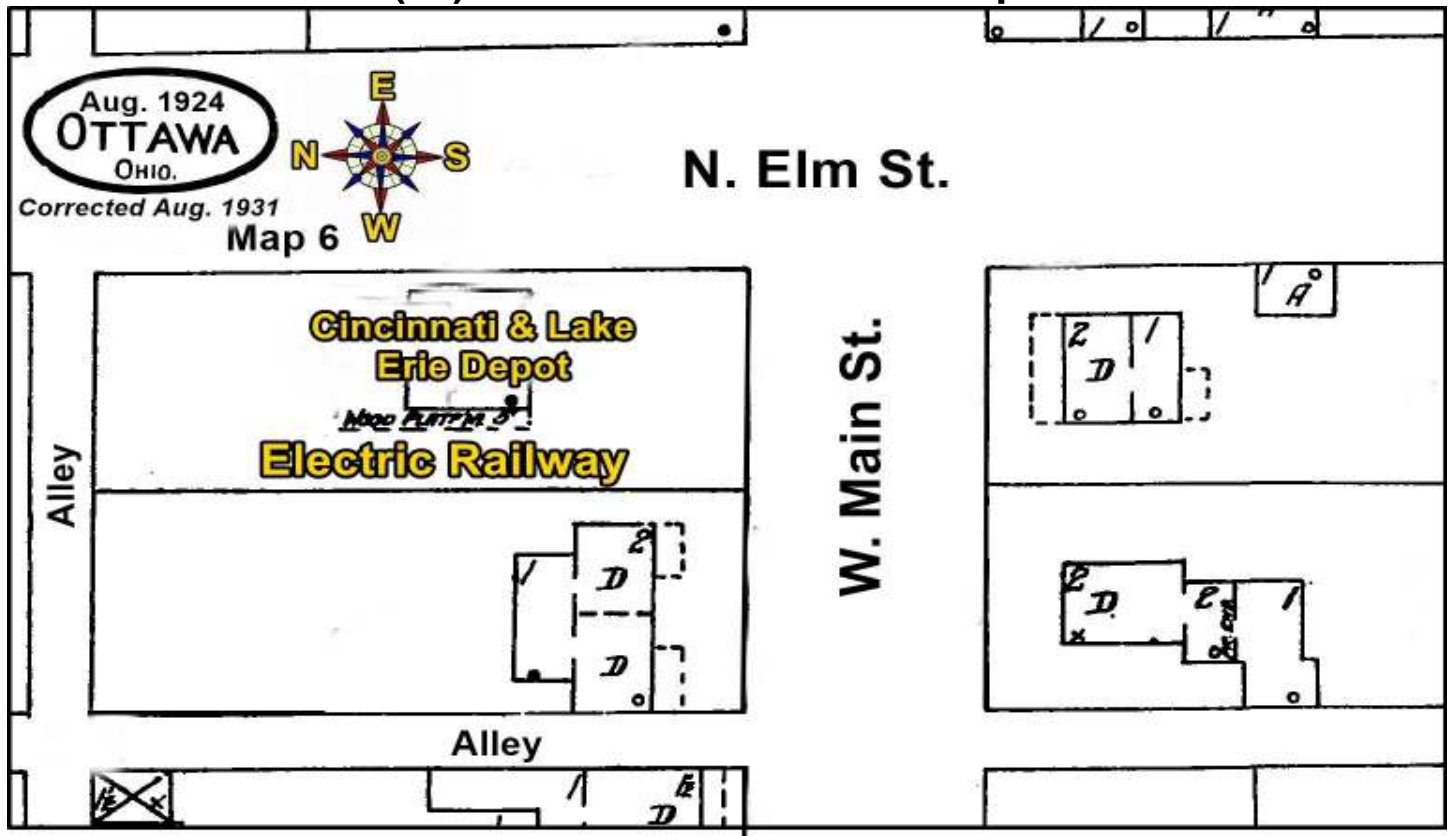
Site 16 - 1931 (Map 5 - E. 4th St.)

(16) The Ottawa Water Works



Site 17 - 1931 (Map 6 - E. Elm St.)

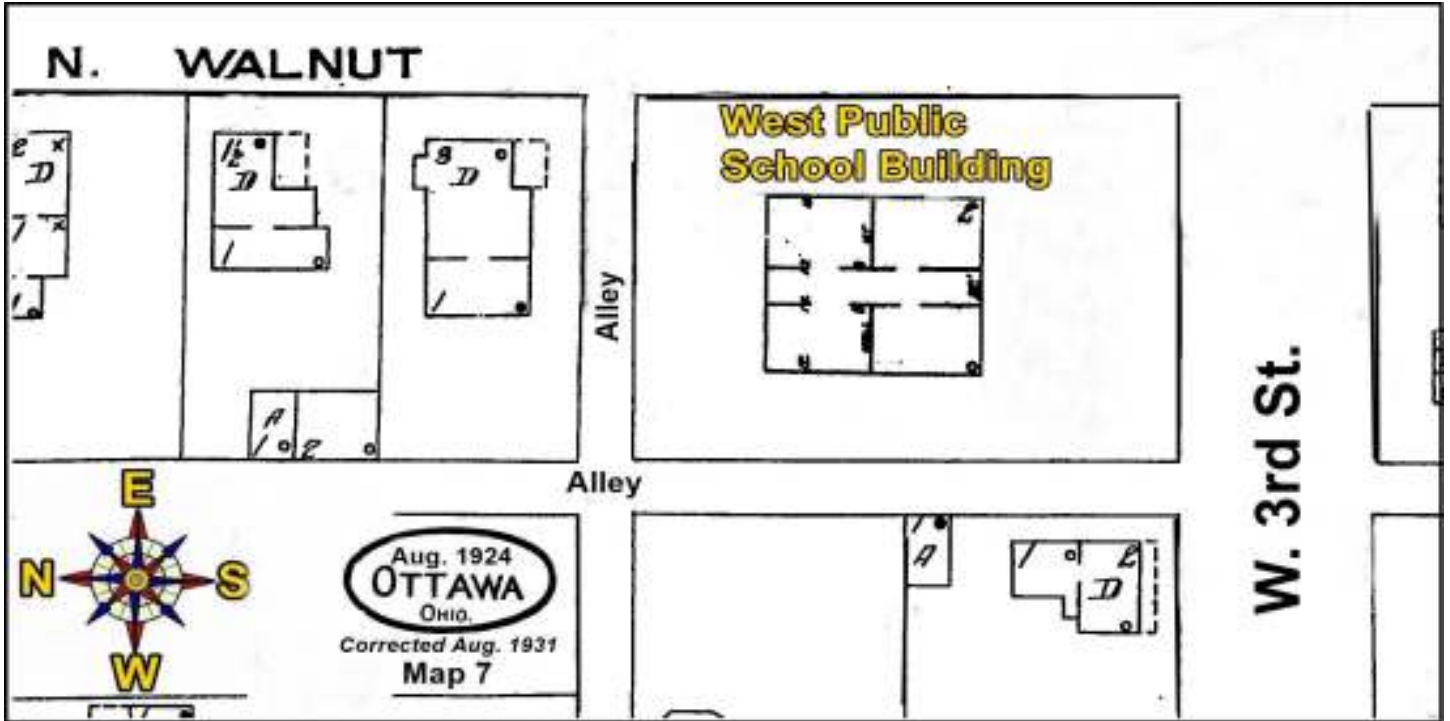
(17) Cincinnati & Lake Erie Depot





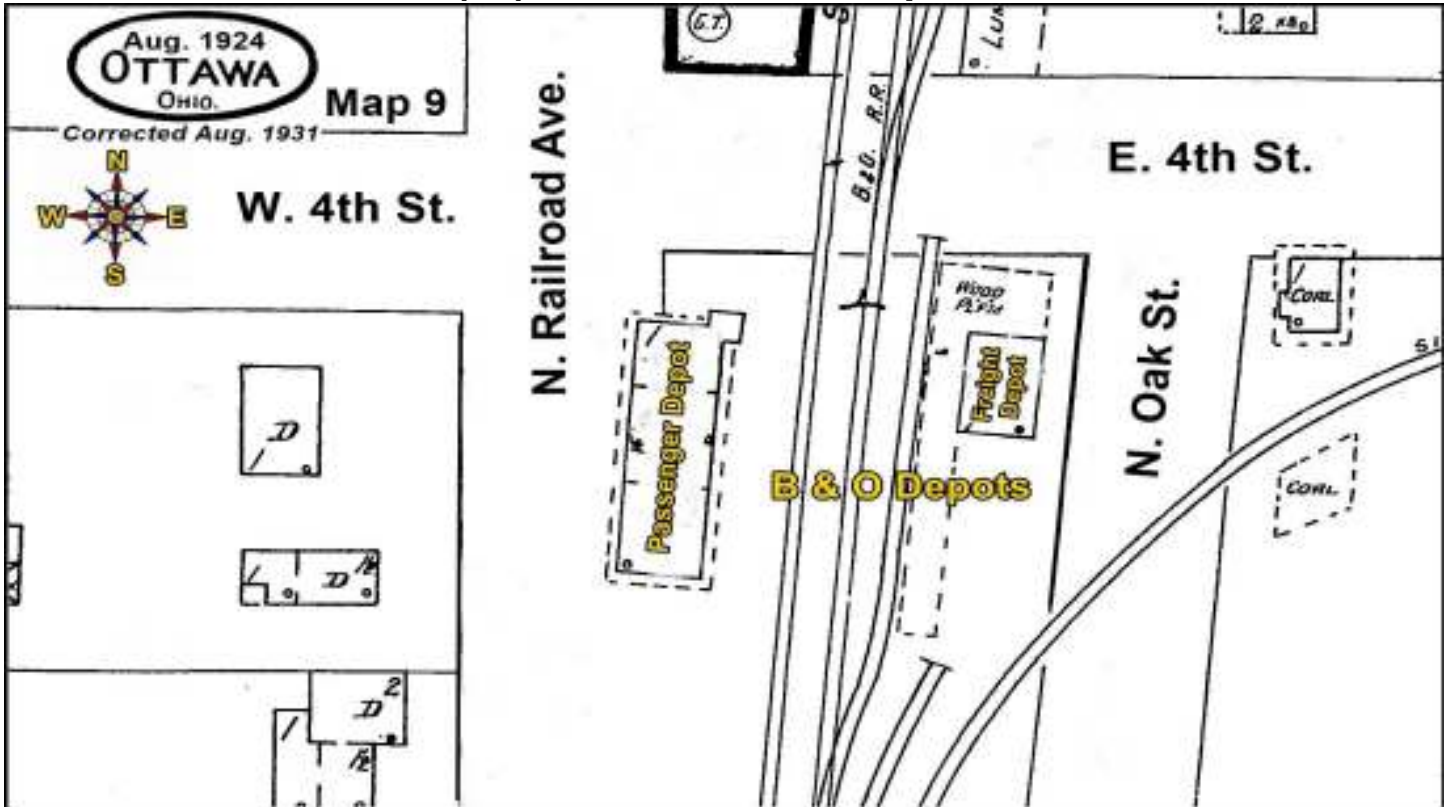
Site 18 - 1931 (Map 7 - W. 3rd St.)

(18) West Public School

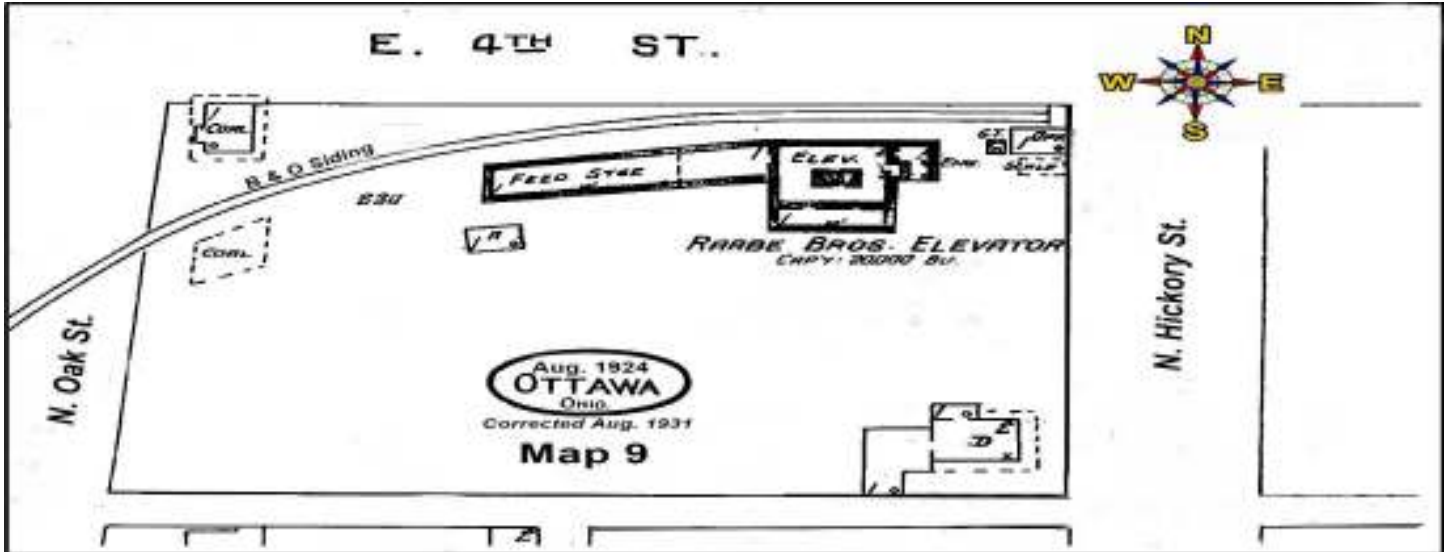


Site 19 - 1931 (Map 9 - E. 4th St.)

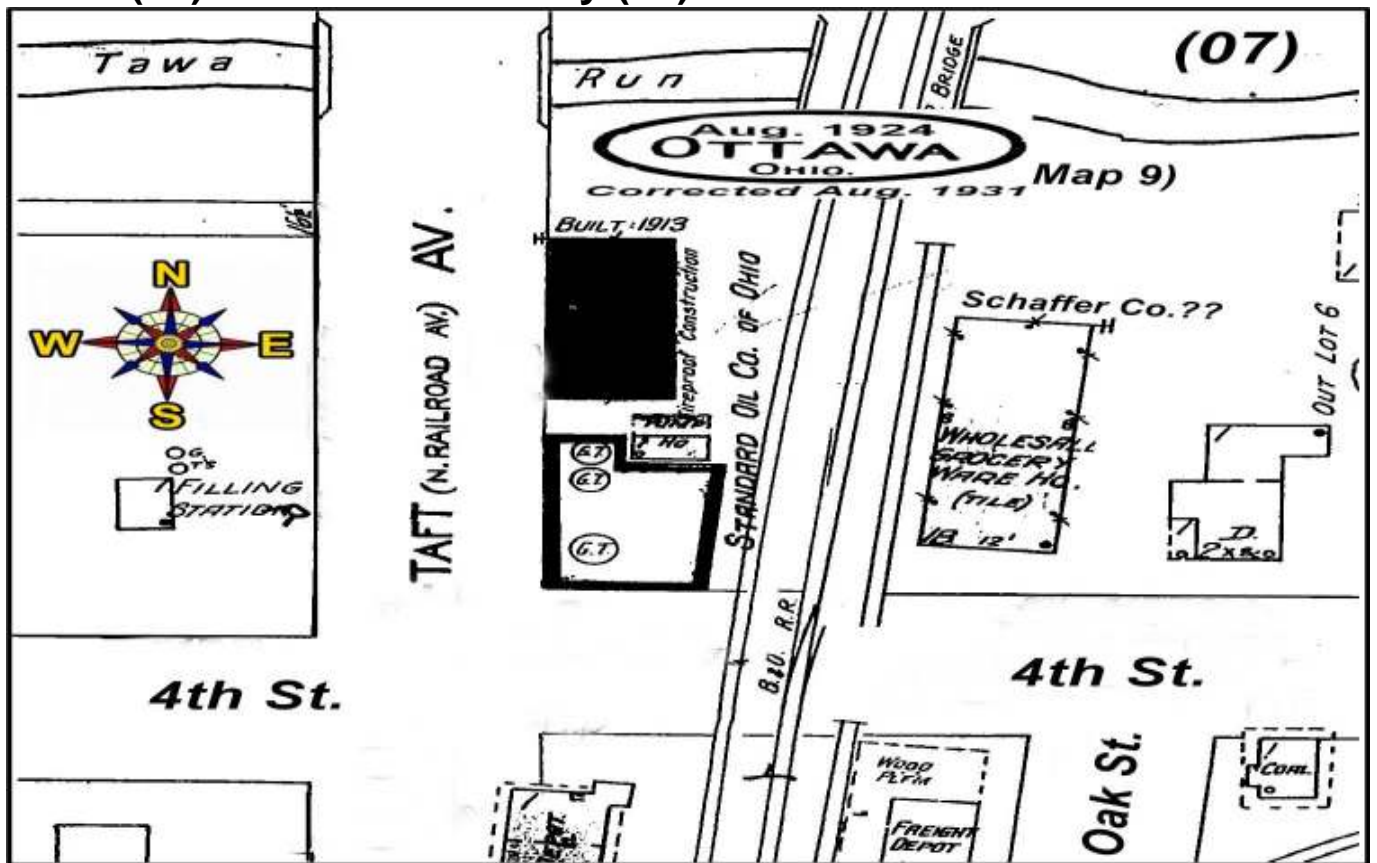
(19) B & O Railroad depots



Site 20 - 1931 (Map 9 - E. 4th St.)  
 (20) Raabe Bros. Elevator

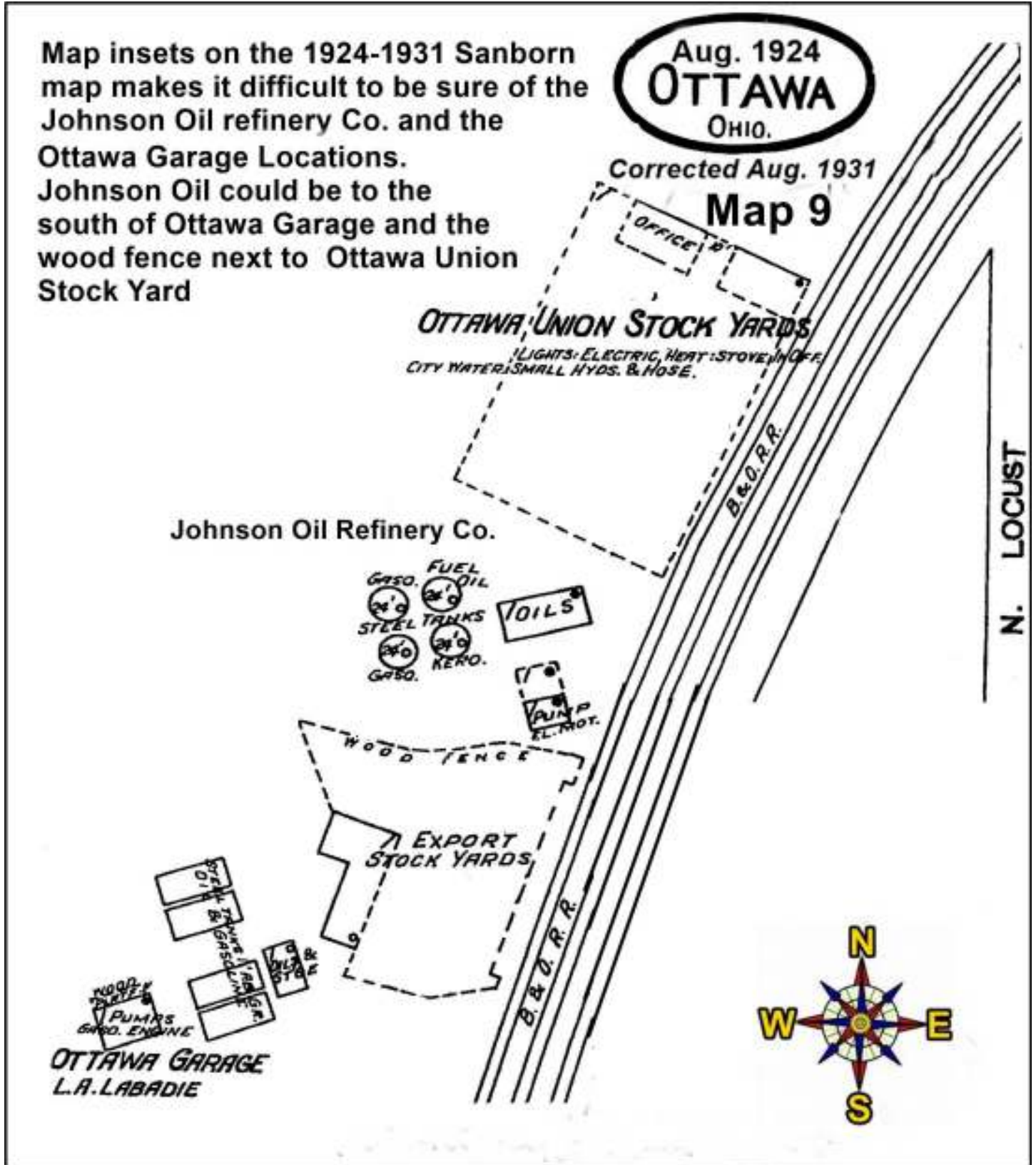


Site 21, 22 - 1931 (Map 9 - E. 4th St.)  
 (21) Wholesale Grocery (22) Standard Oil Co. of Ohio

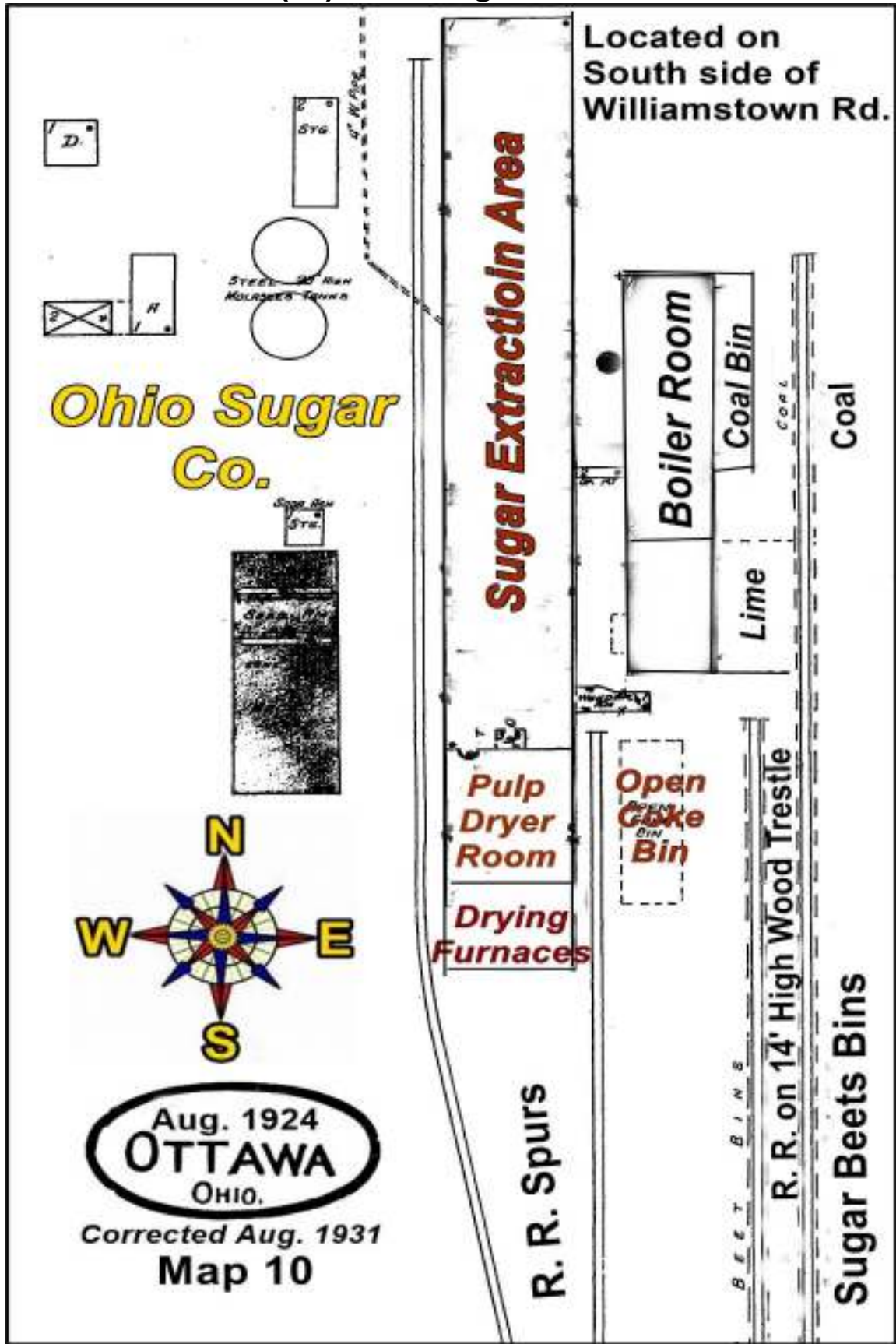


Site 23, 24, 25 - 1931 (Map 9 - N. Locust St.)

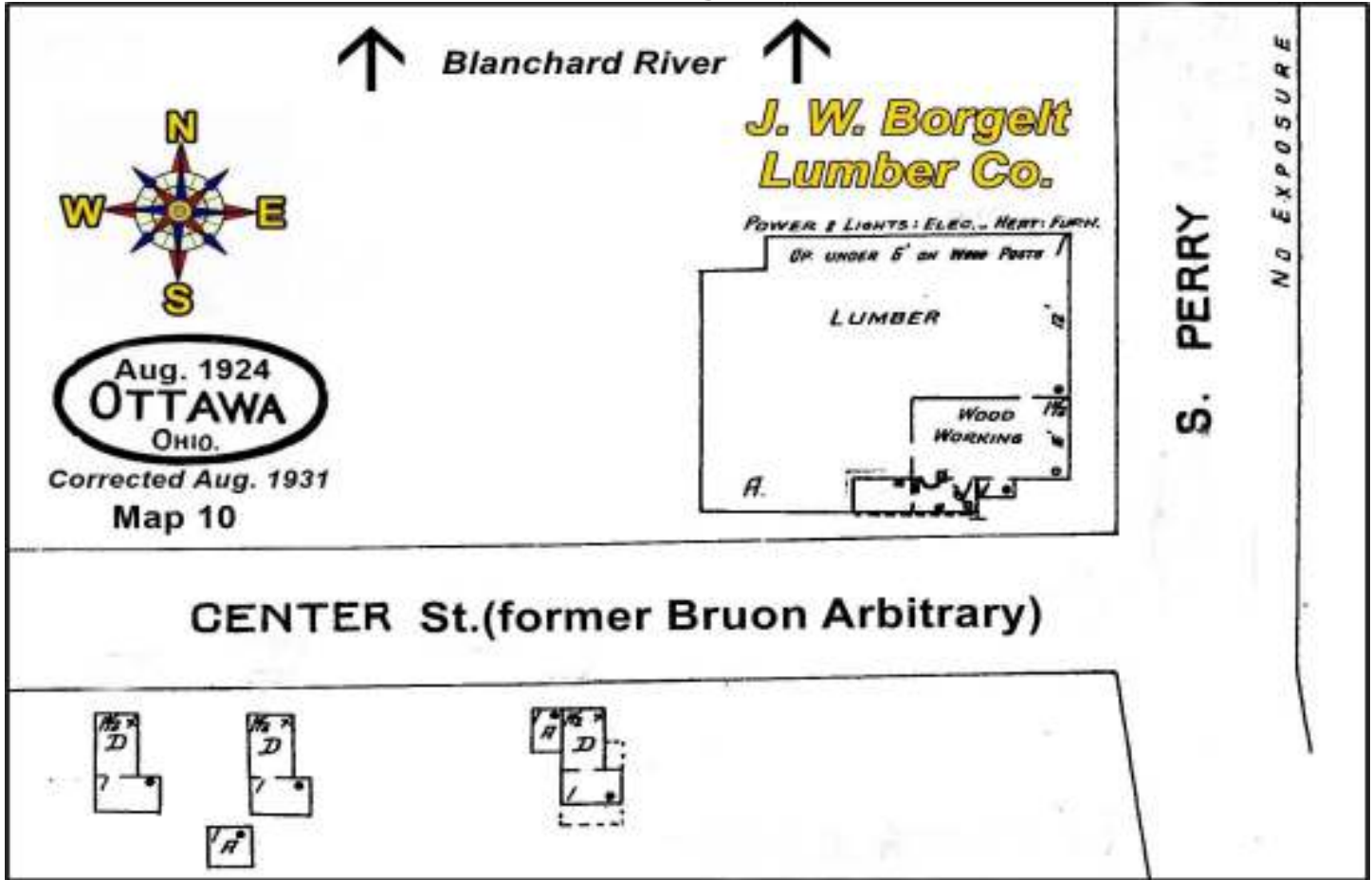
(23) Ottawa Garage (24) Johnson Oil Refinery (25) Ottawa Union Stock Yard



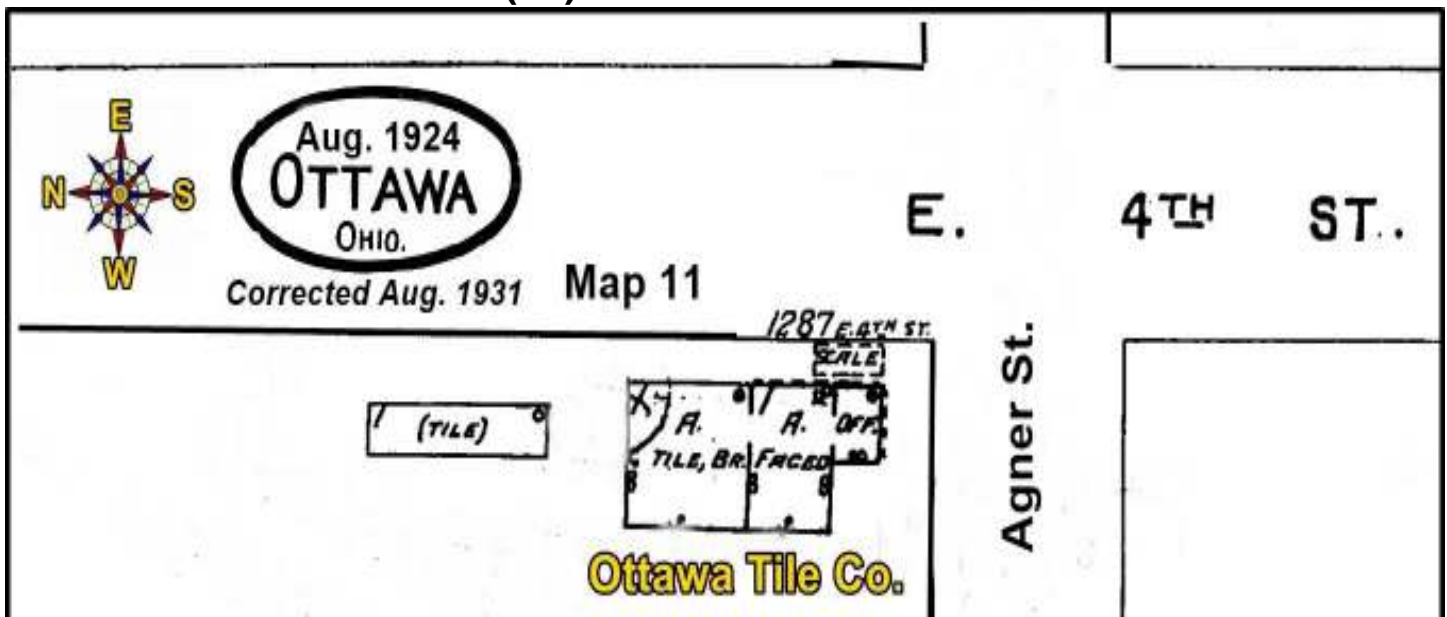
Site 26 - 1931 (Map 10 - Williamstown Rd.)  
(26) Ohio Sugar Co.



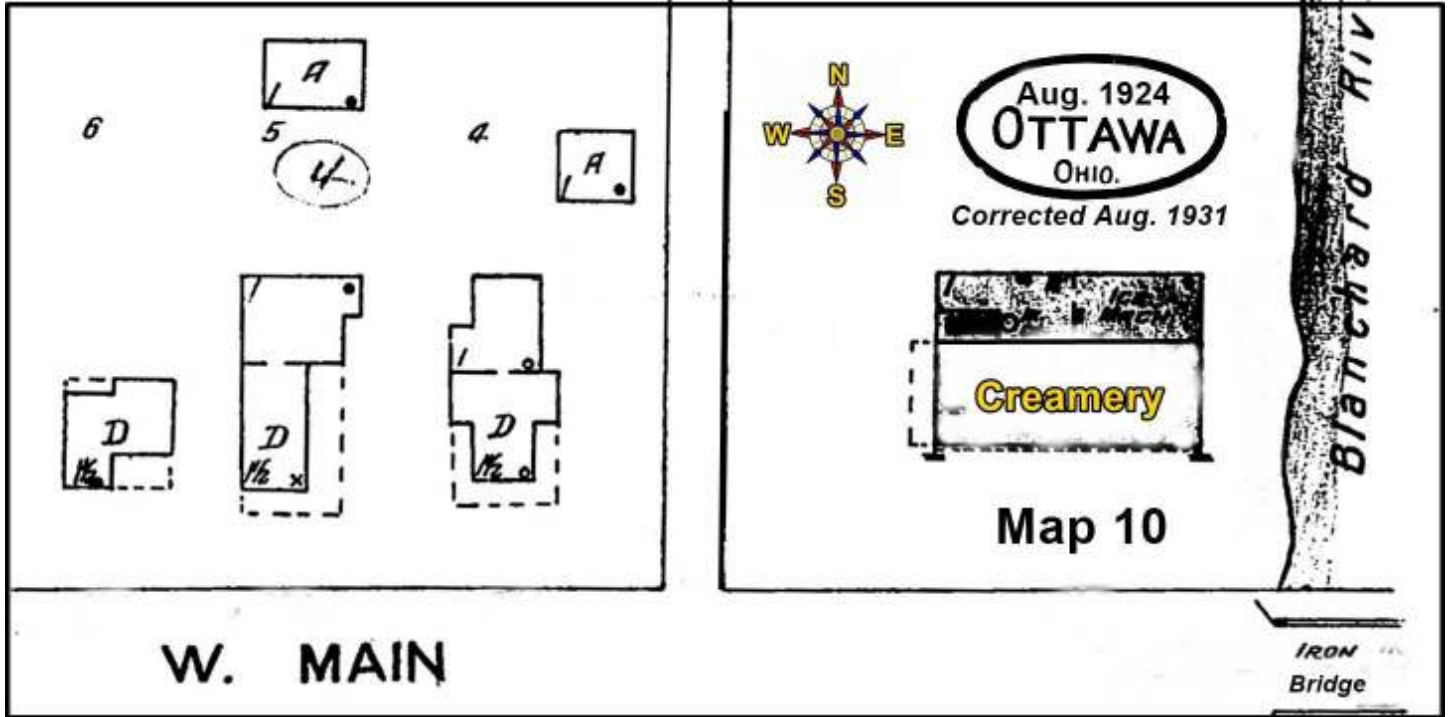
Site 27 - 1931 (Map 10 - S. Perry St.)  
 (27) J. W. Borgelt Co.



Site 28 - 1931 (Map 11 - E. 4th St.)  
 (28) Ottawa Tile Co.



Site 29 - 1931 (Map 10 - W. Main St.)  
 (29) Creamery



Site 30 - 1931 (Map 6 - W. Main St.)  
 (30) Garage & Filling Station

