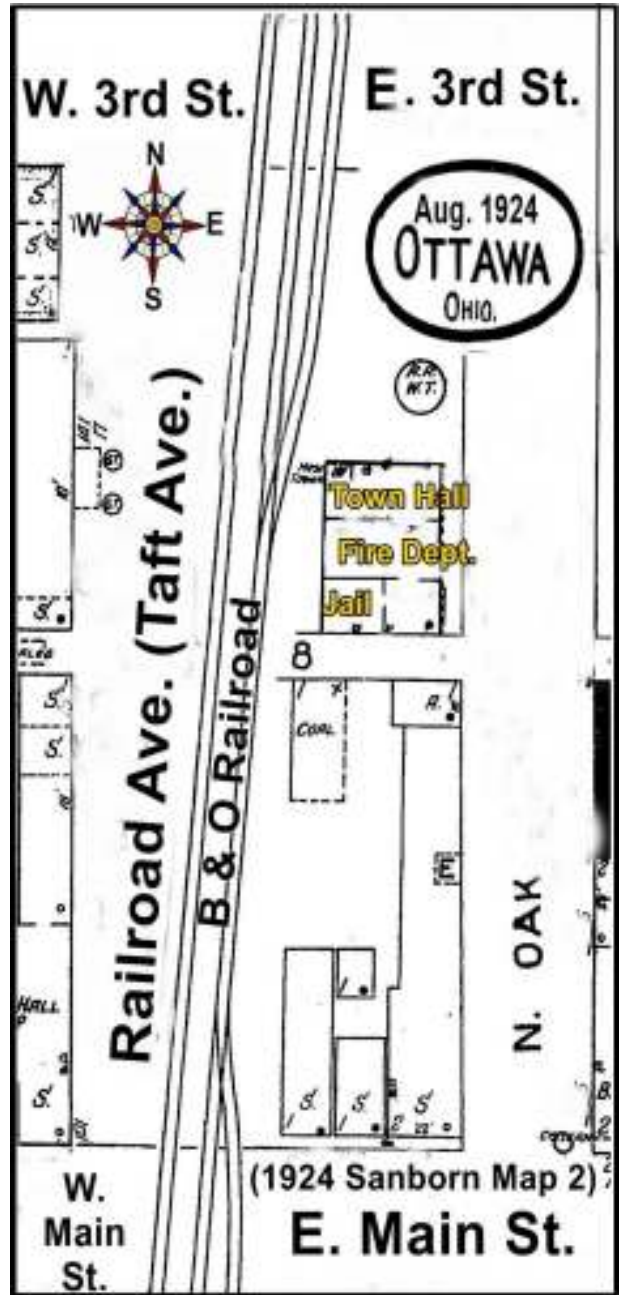
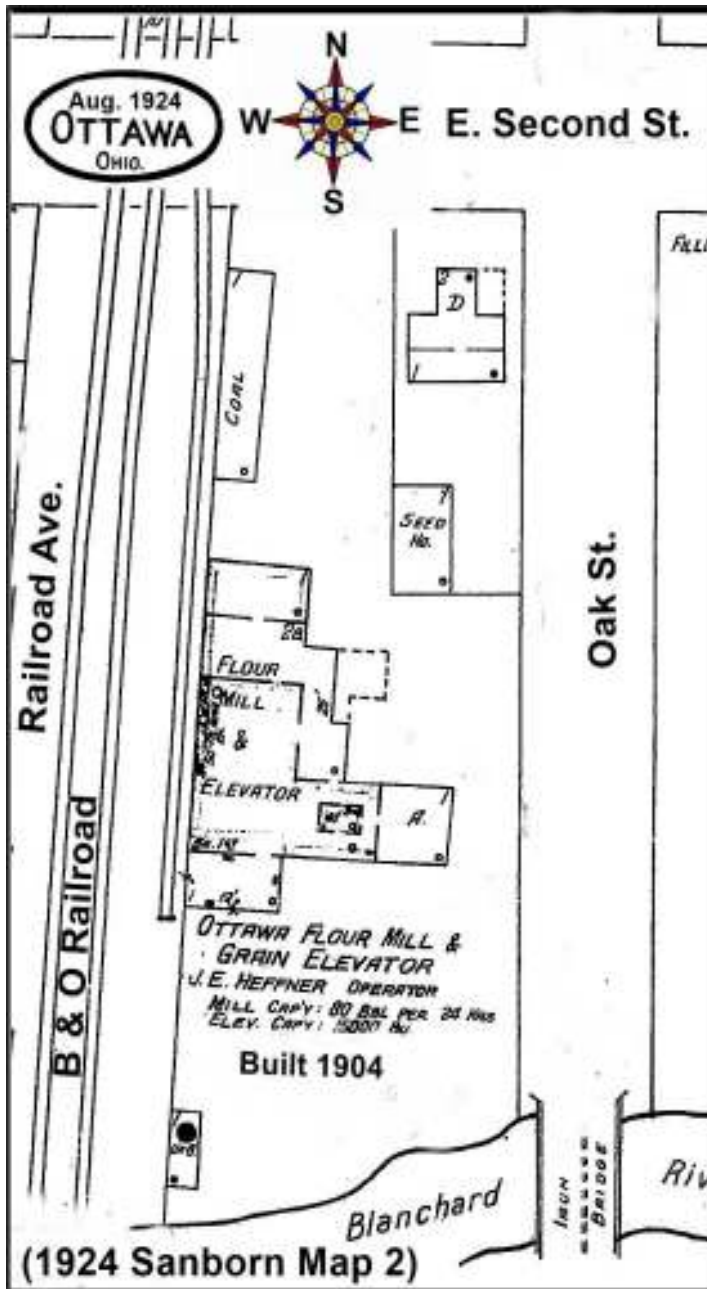


1924 Sanborn Maps - 25 Sites

Site 1 - 1924 (Map 2 - Oak St.) * Site 2 - 1924 (Map 2 - Oak. St.)

(1) Ottawa Flour Mill & Grain Elevator

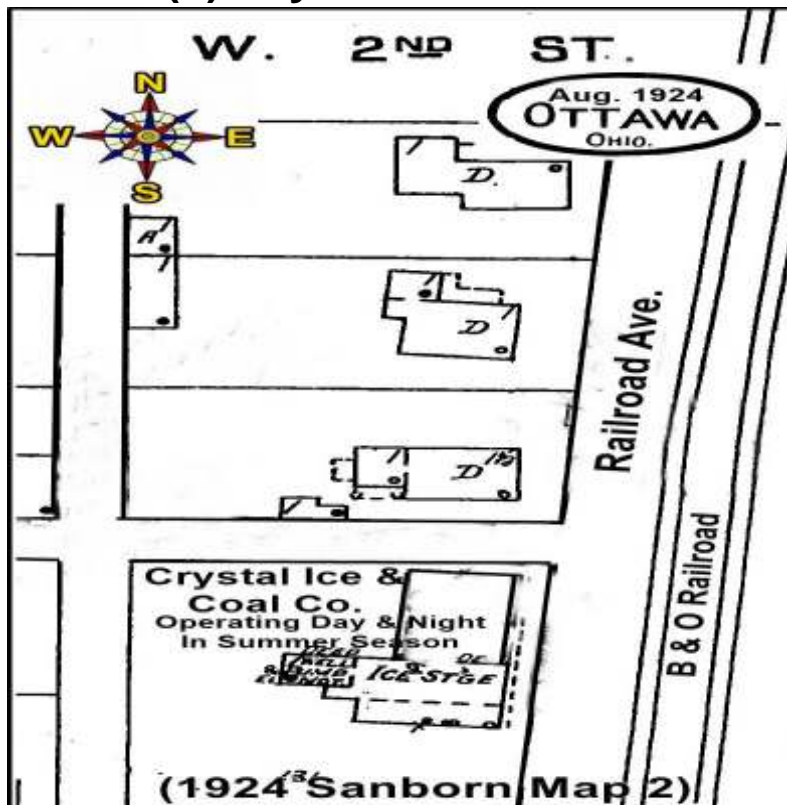
(2) Town Hall Fire Dept.



**Site 3 - 1924 (Map 2 - Taft Ave.)
(3) Auto Garage**

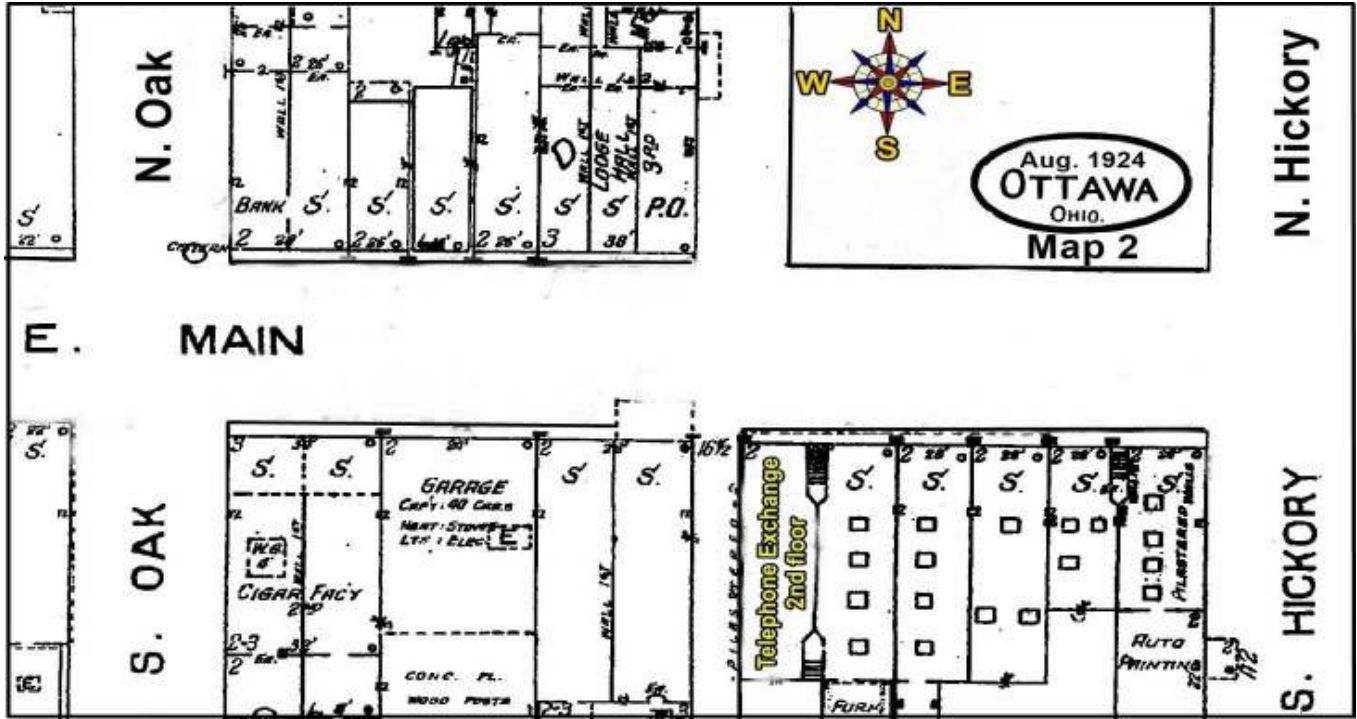


**Site 4 - 1924 (Map 2 - Railroad Ave)
(4) Crystal Ice & Coal**



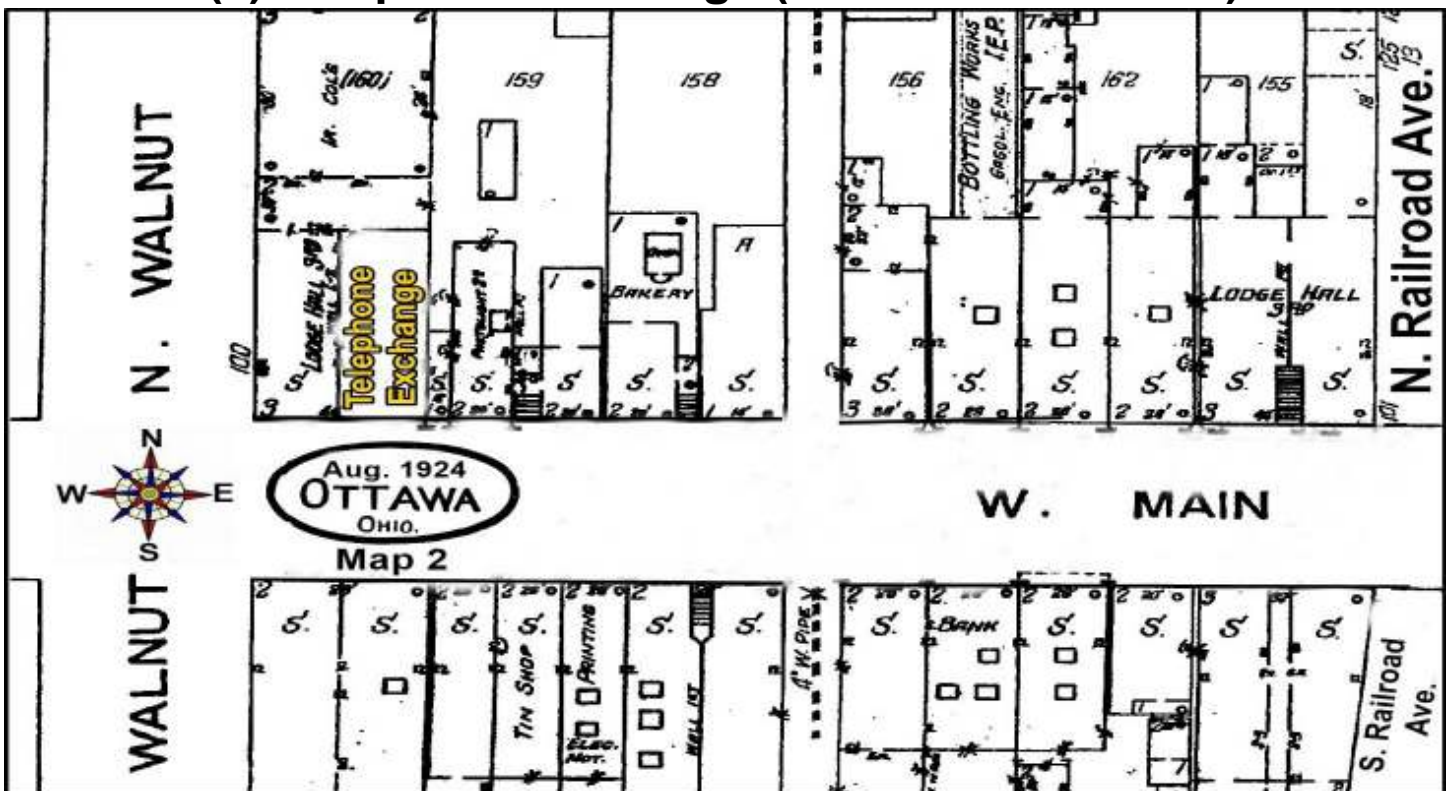
Site 5 - 1924 (Map 2 - E. Main St.)

(5) Telephone Exchange (2nd Floor E. Main South Side)

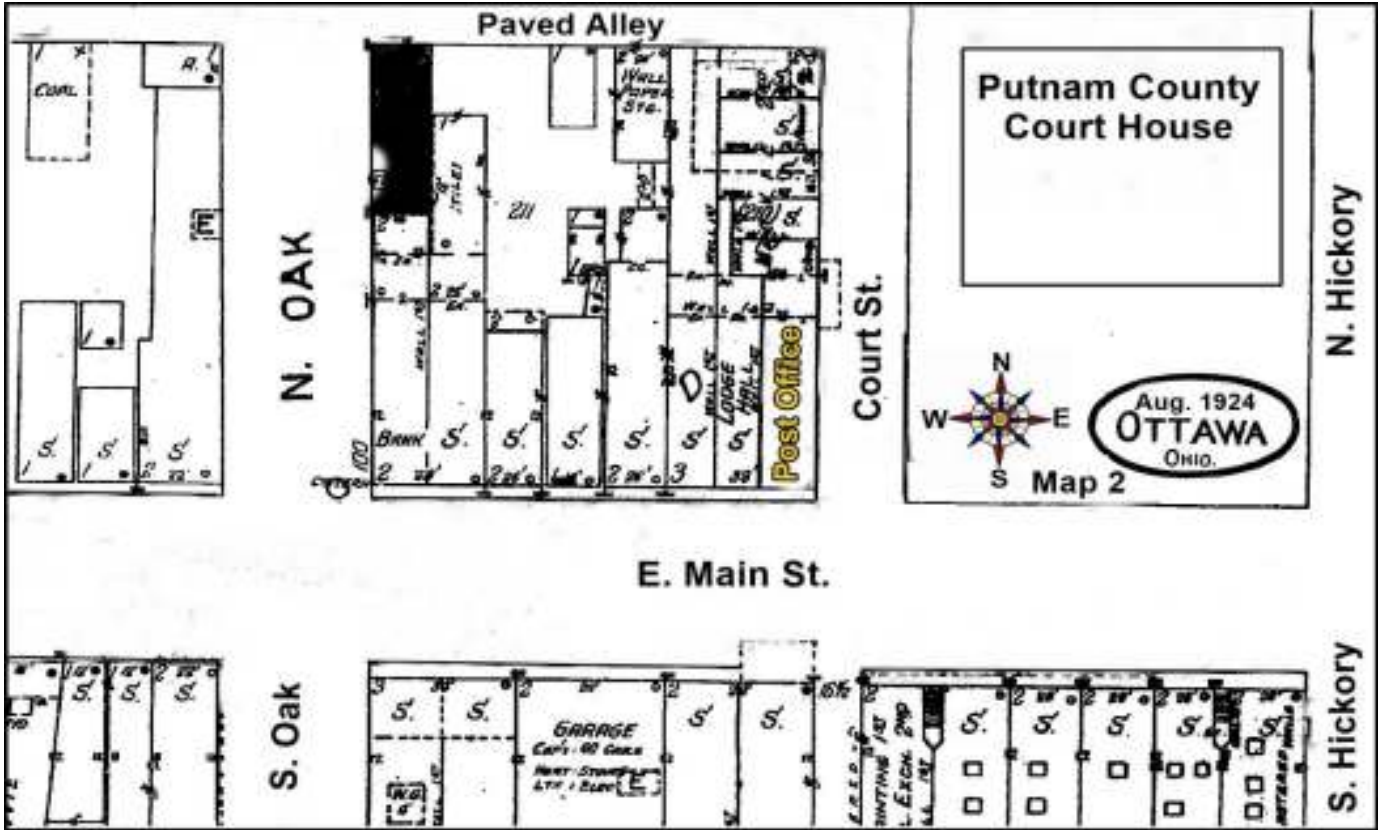


Site 6 - 1924 (Map 2 - W. Main St.)

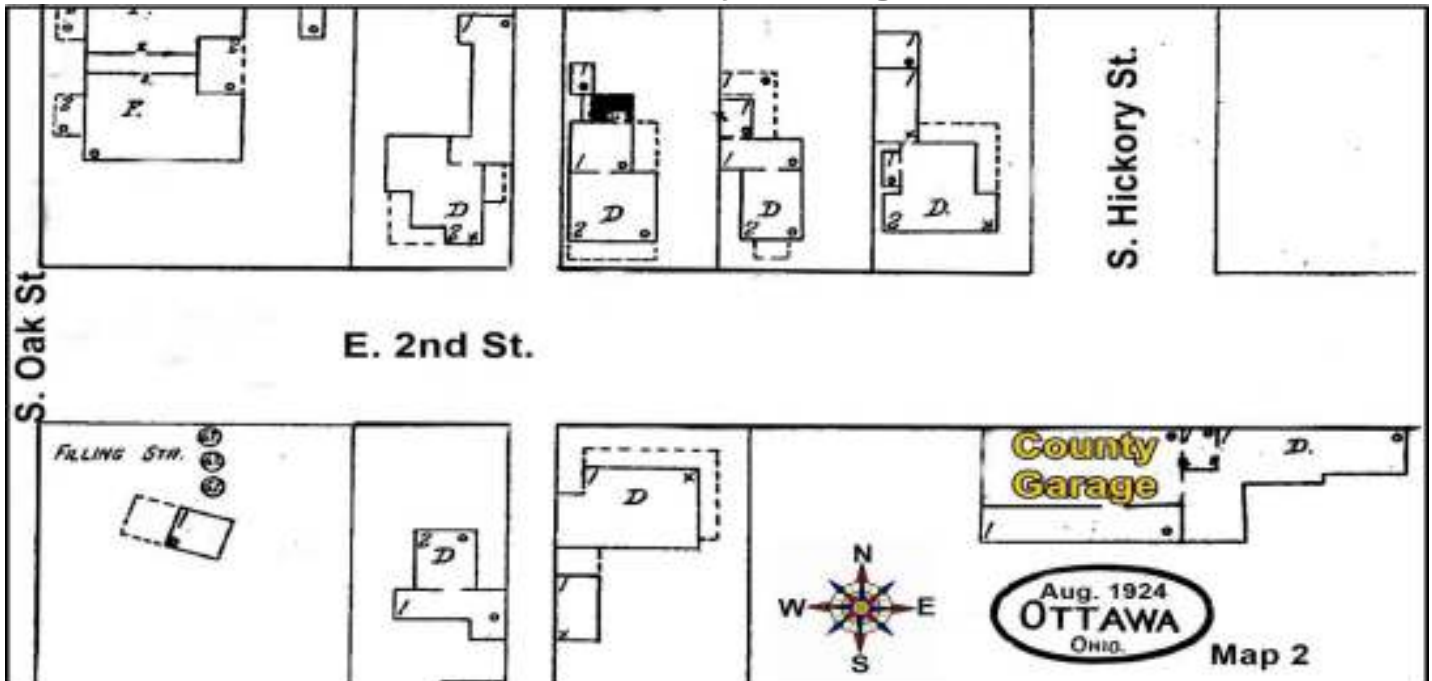
(6) Telephone Exchange (W. Main North Side)



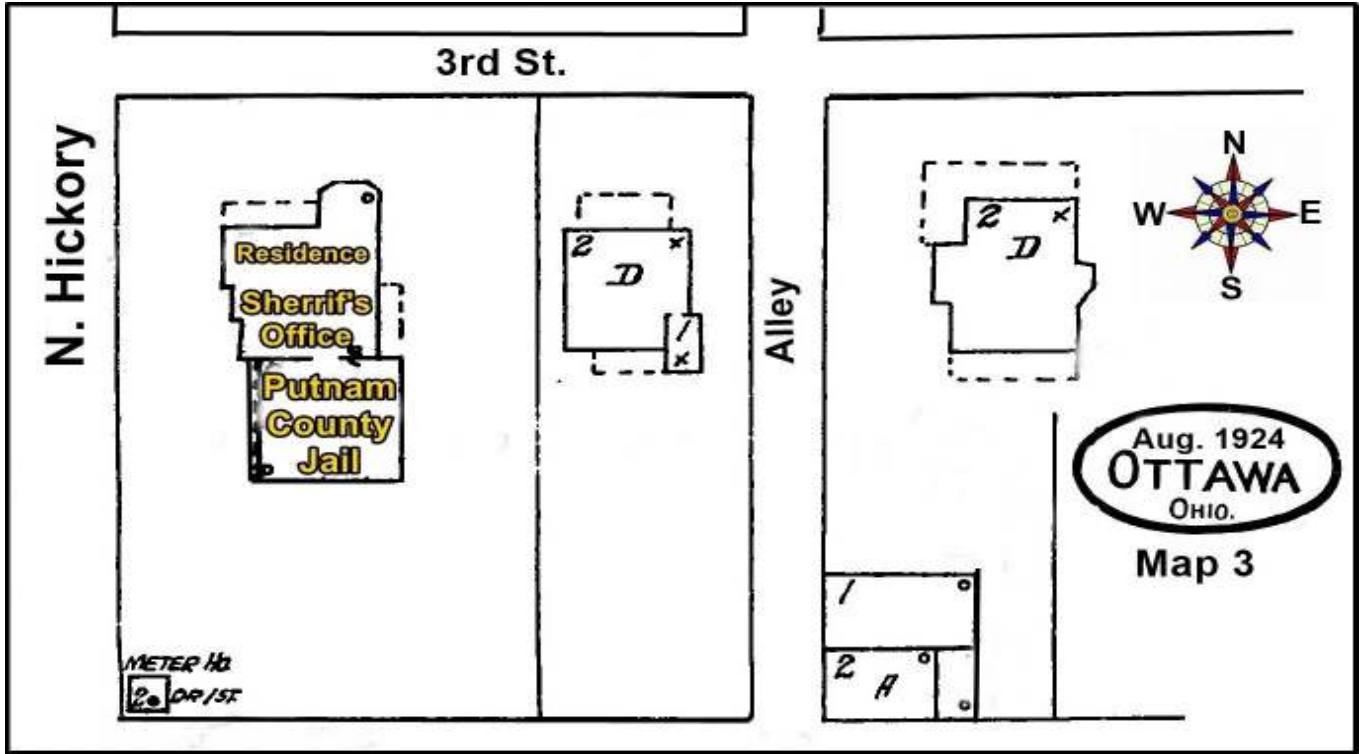
**Site 7 - 1924 (Map 2 - E. Main St.)
(7) Post Office**



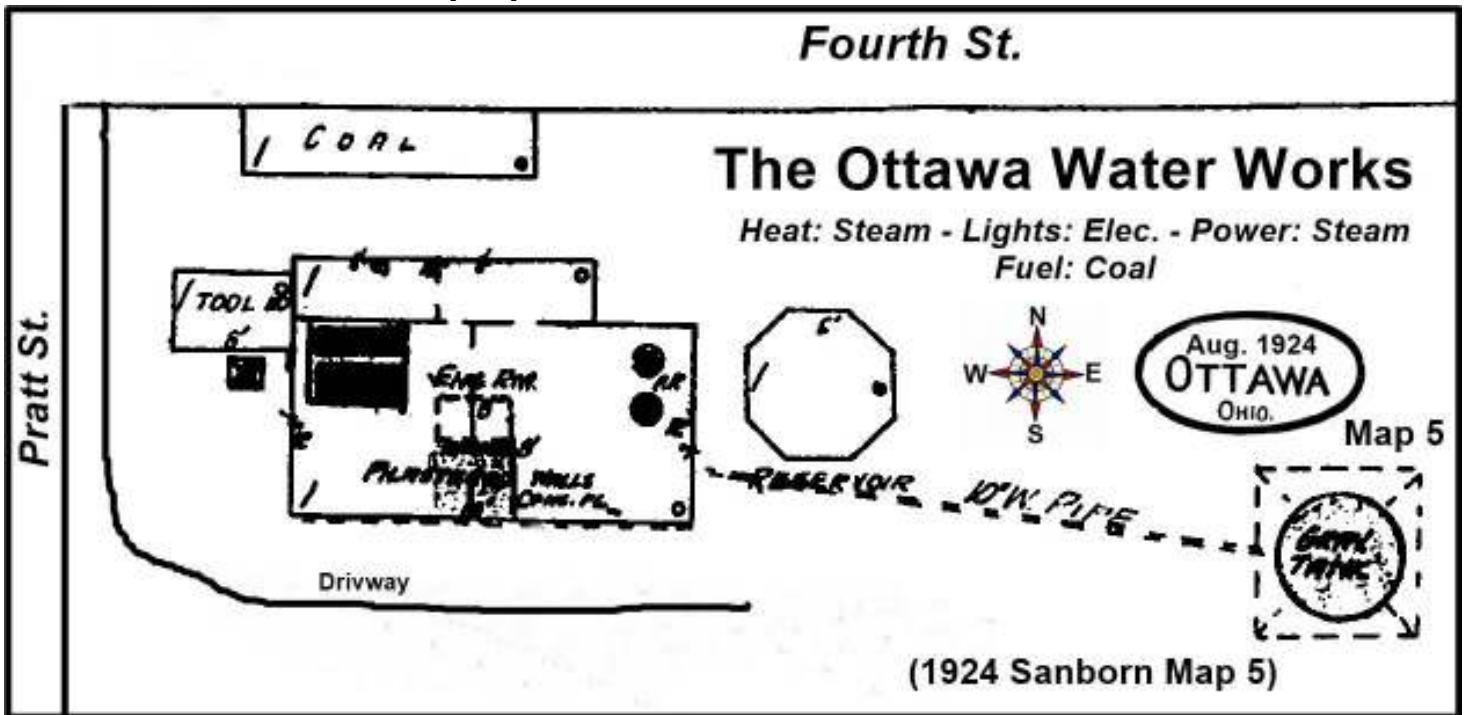
**Site 8 - 1924 (Map 2 - E. 2nd St.)
(8) County Garage**



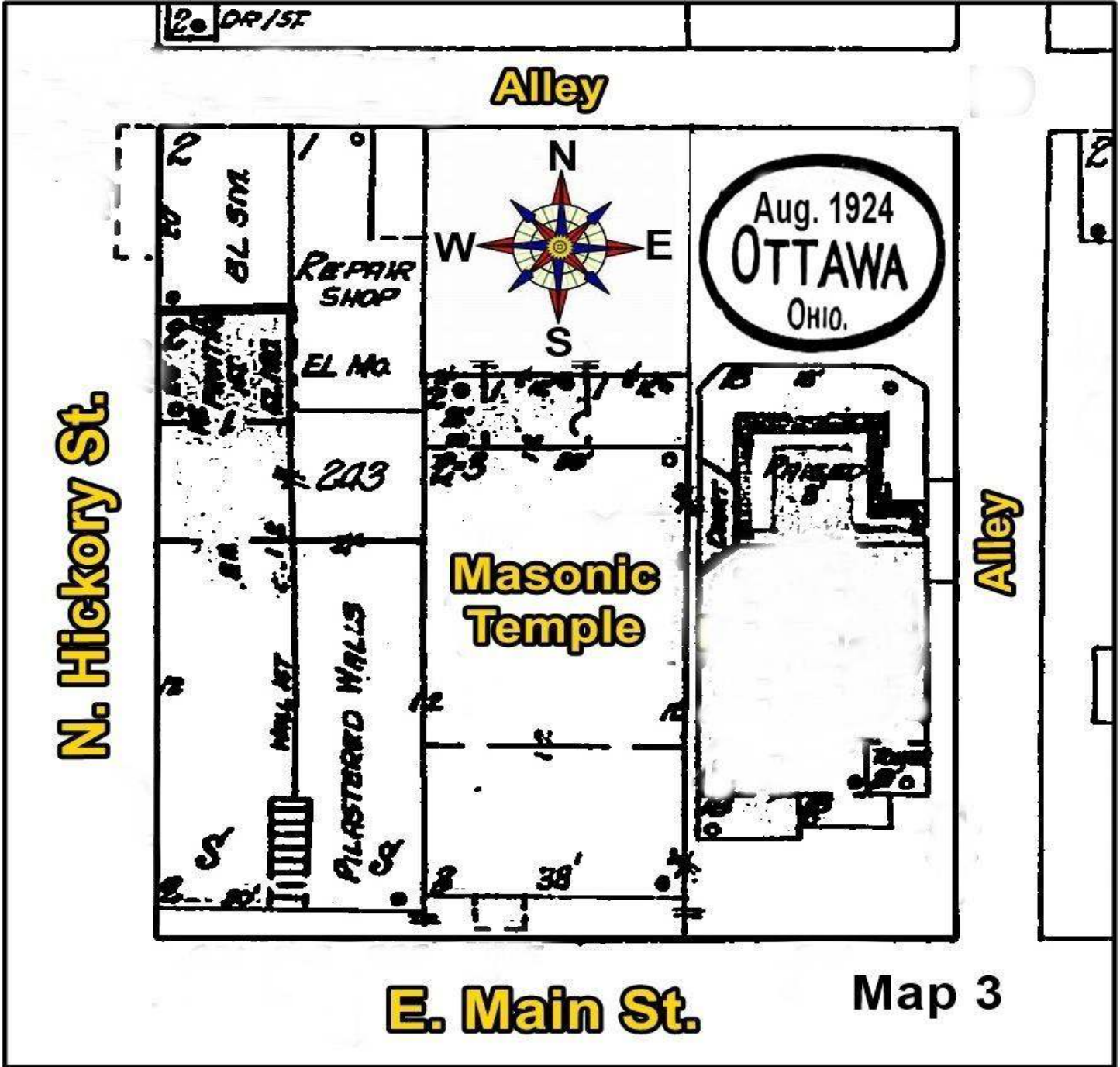
**Site 9 - 1924 (Map 3 - N. Hickory St.)
(9) County Jail**



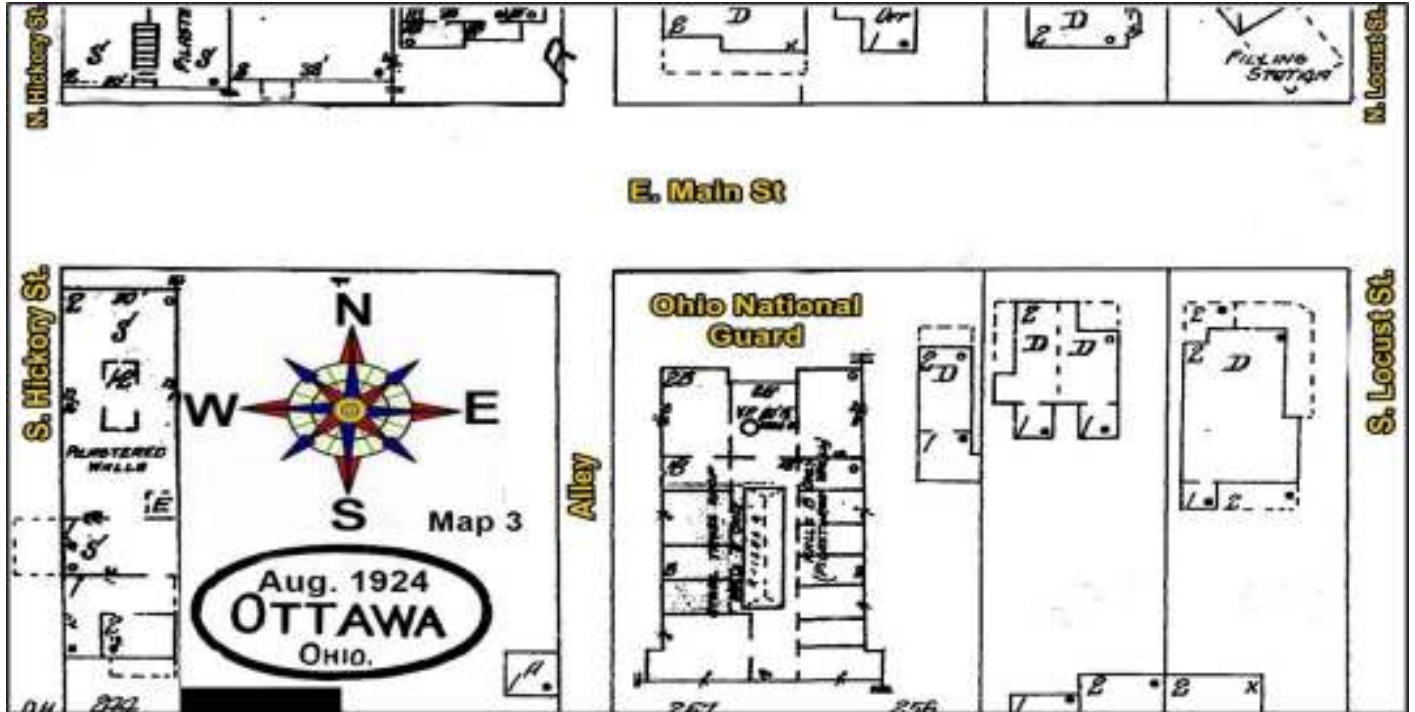
**Site 10 - 1924 (Map 5 - W. 4th St.)
(10) Ottawa Water Works**



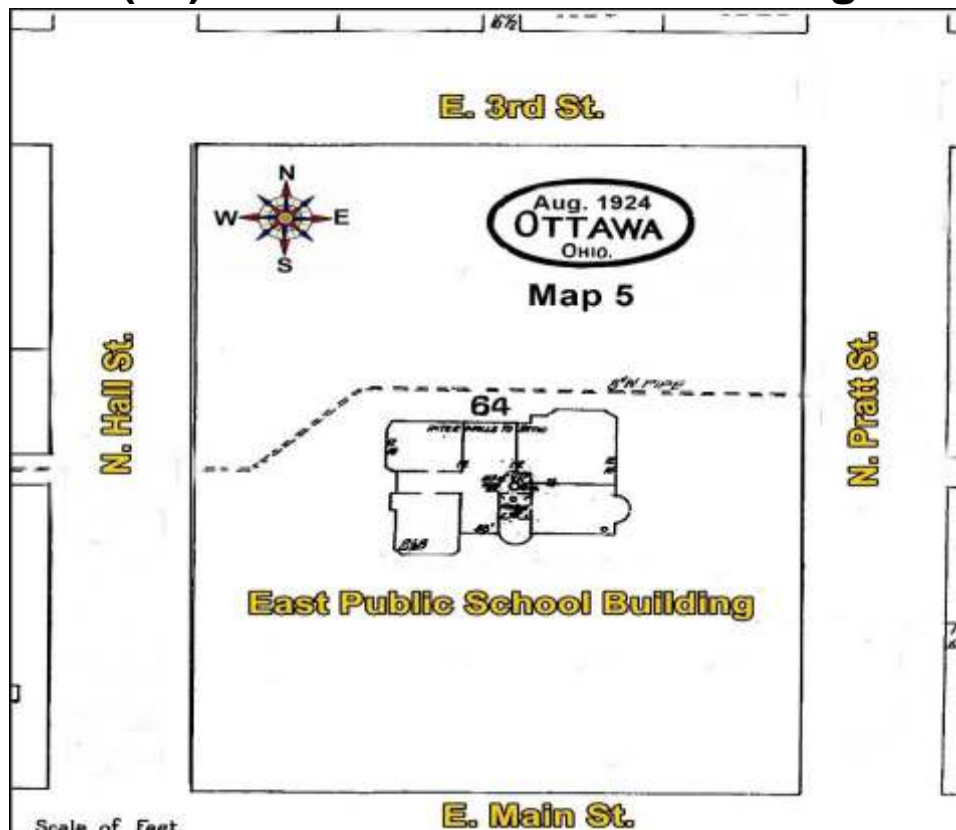
Site 11 - 1924 (Map 3 - E. Main St.)
(11) Masonic Temple



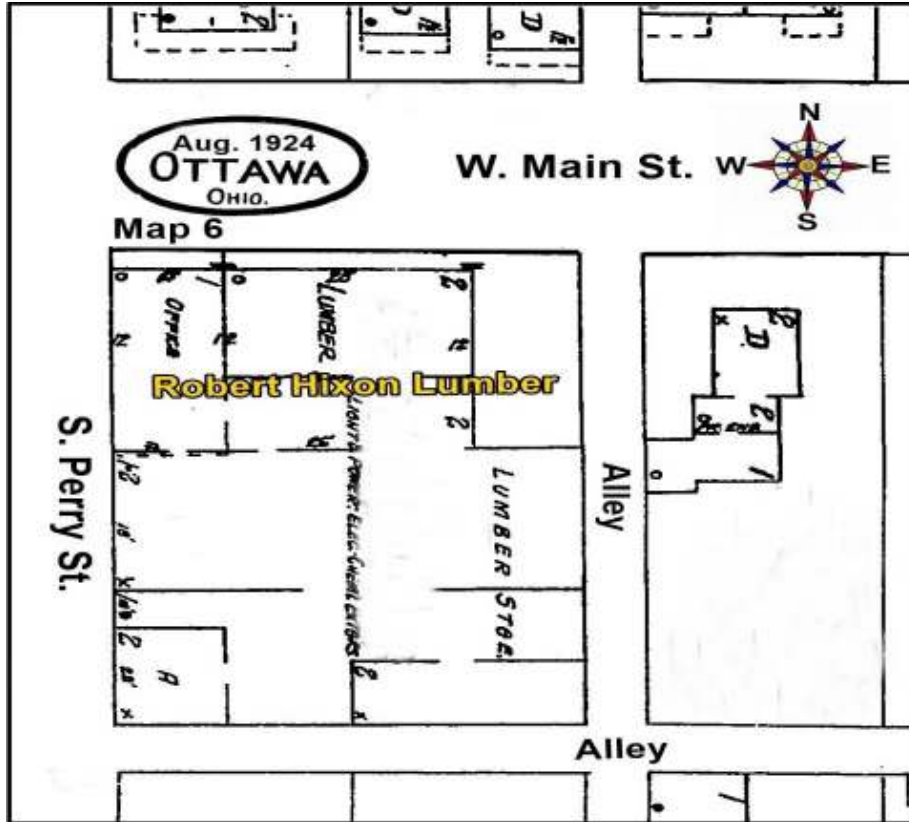
Site 12 - 1924 (Map 3 - E. Main St.)
(12) Ohio National Guard



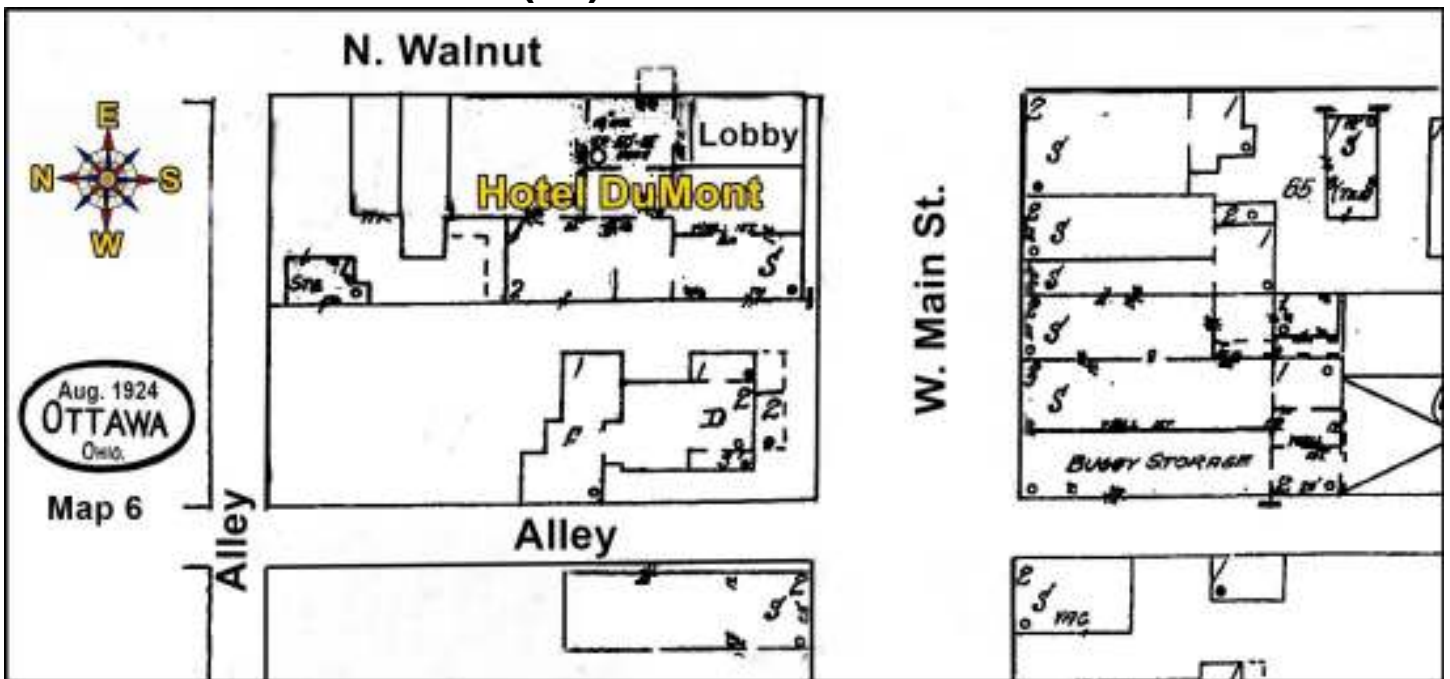
Site 13 - 1924 (Map 5 - E. Main St.)
(13) East Public-School Building



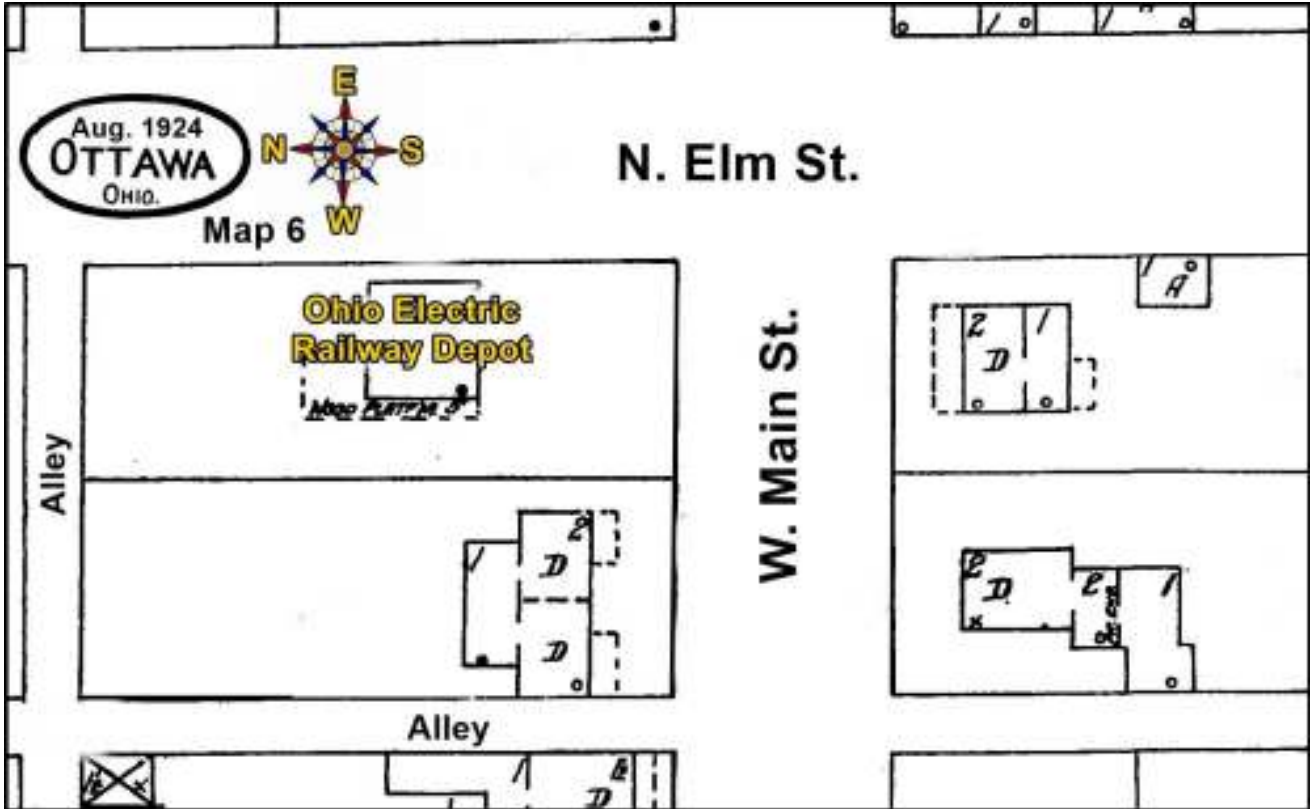
Site 14 - 1924 (Map 6 - S. Perry St.)
(14) Robert Hixon Lumber



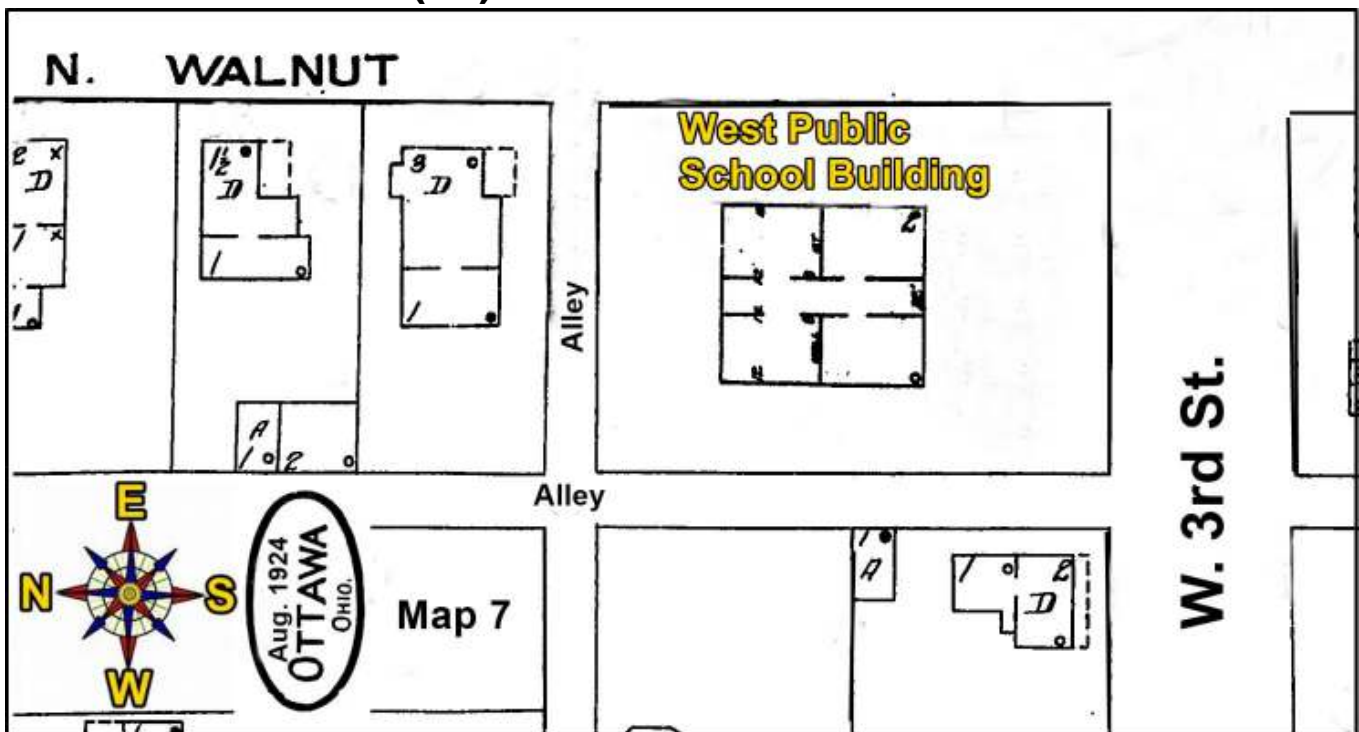
Site 15 - 1924 (Map 6 - E. Main St.)
(15) Hotel DuMont



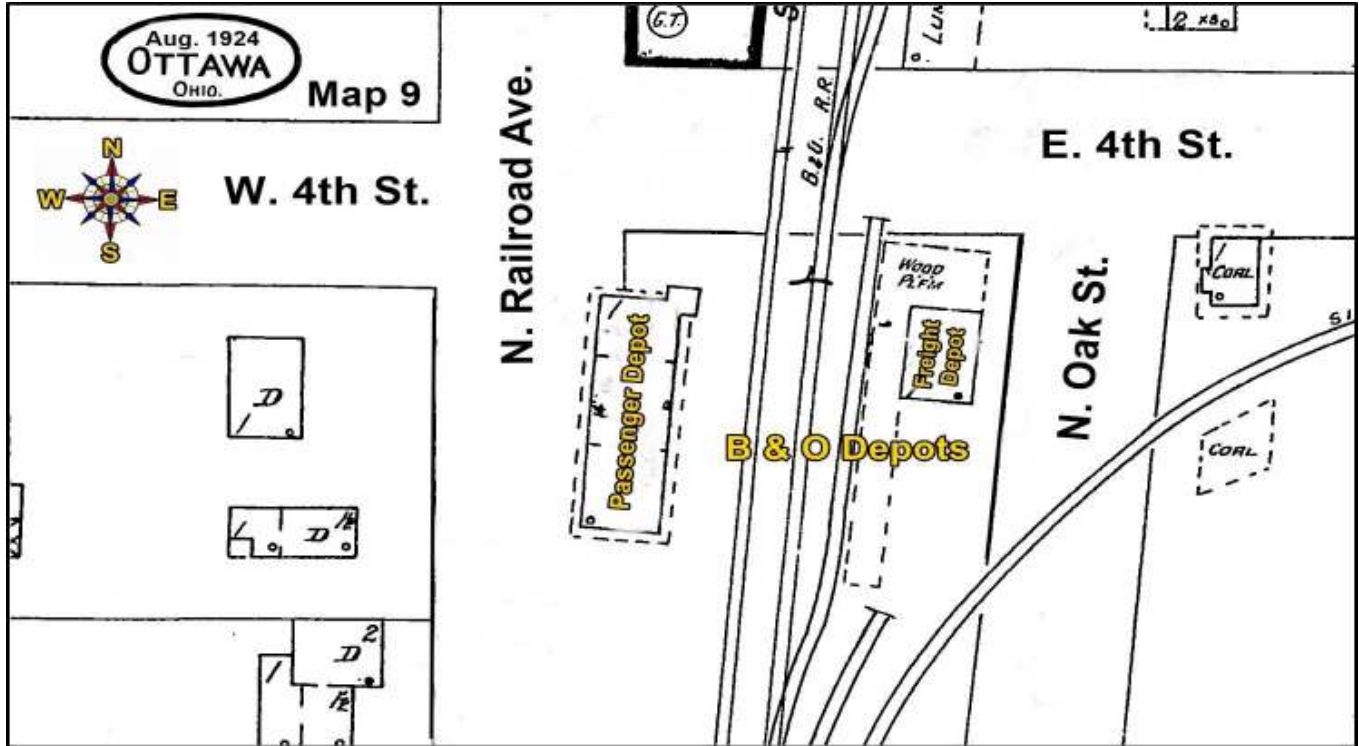
Site 16 - 1924 (Map 6 - N. Elm St.)
(16) Ohio Electric Railway Depot



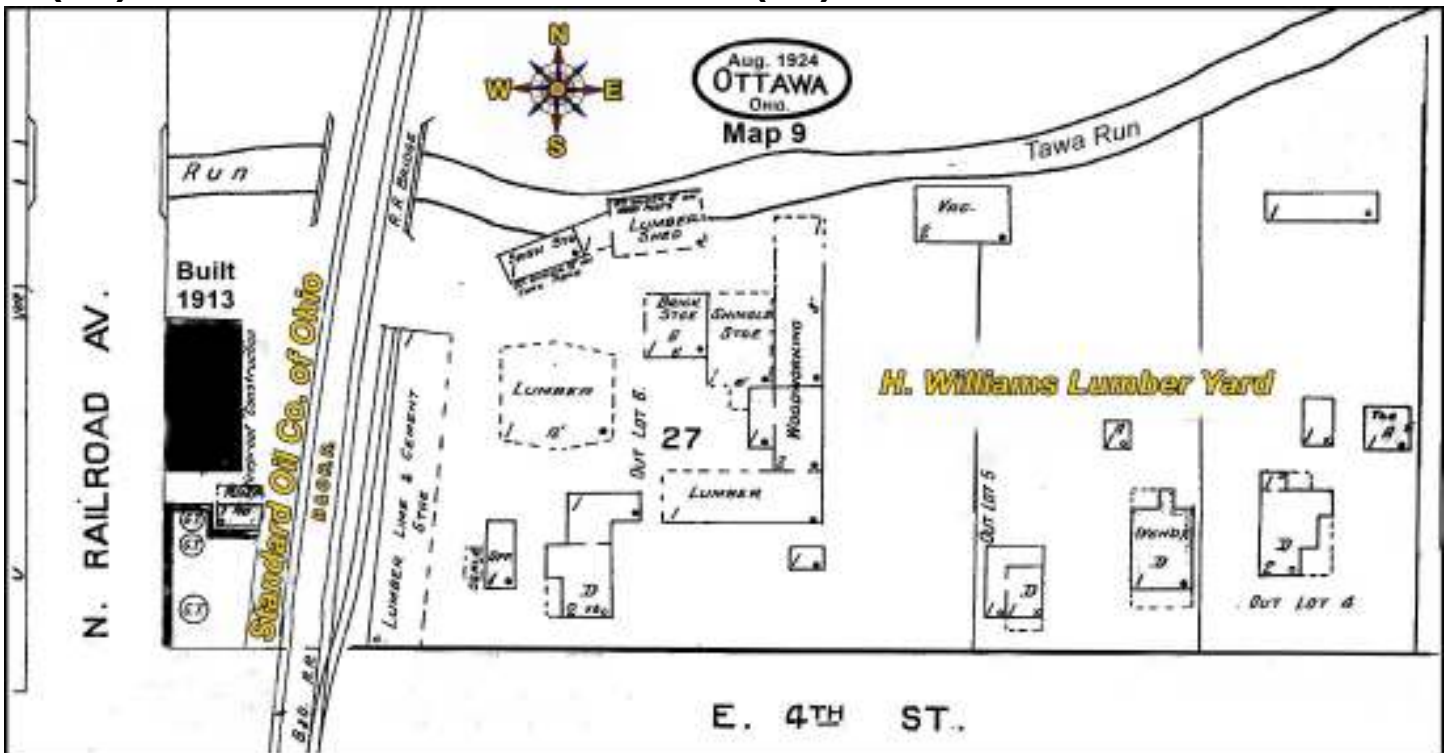
Site 17 - 1924 (Map 7 - W. 3rd St.)
(17) West Public School



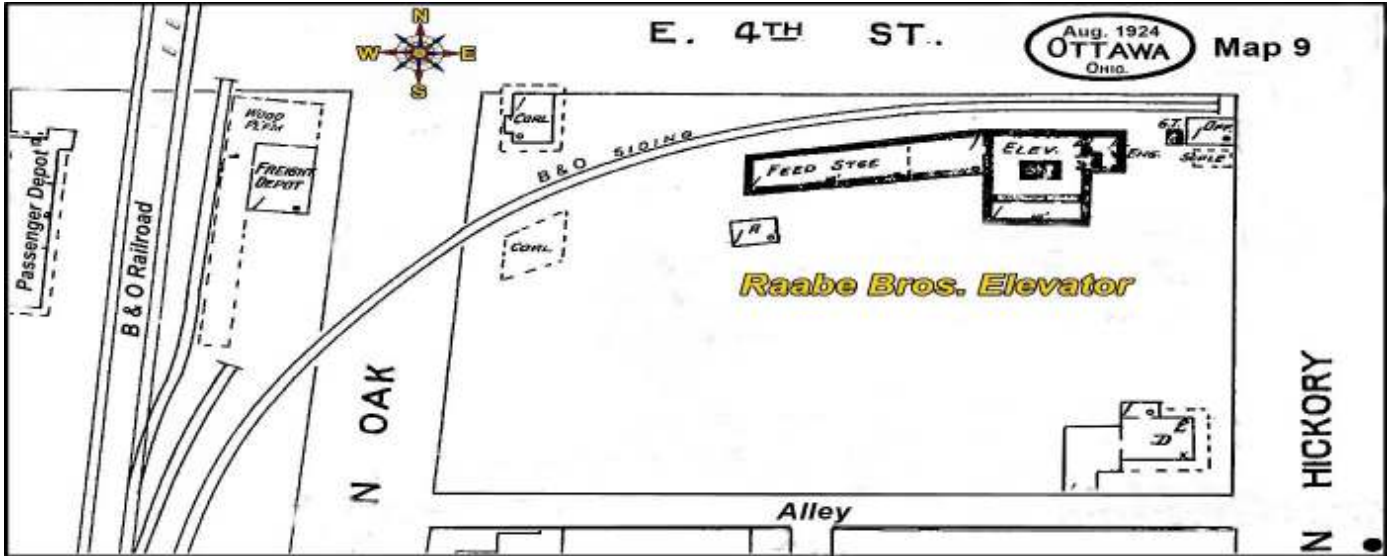
Site 18 - 1924 (Map 9 - N. Oak St.)
(18) B & O Depots



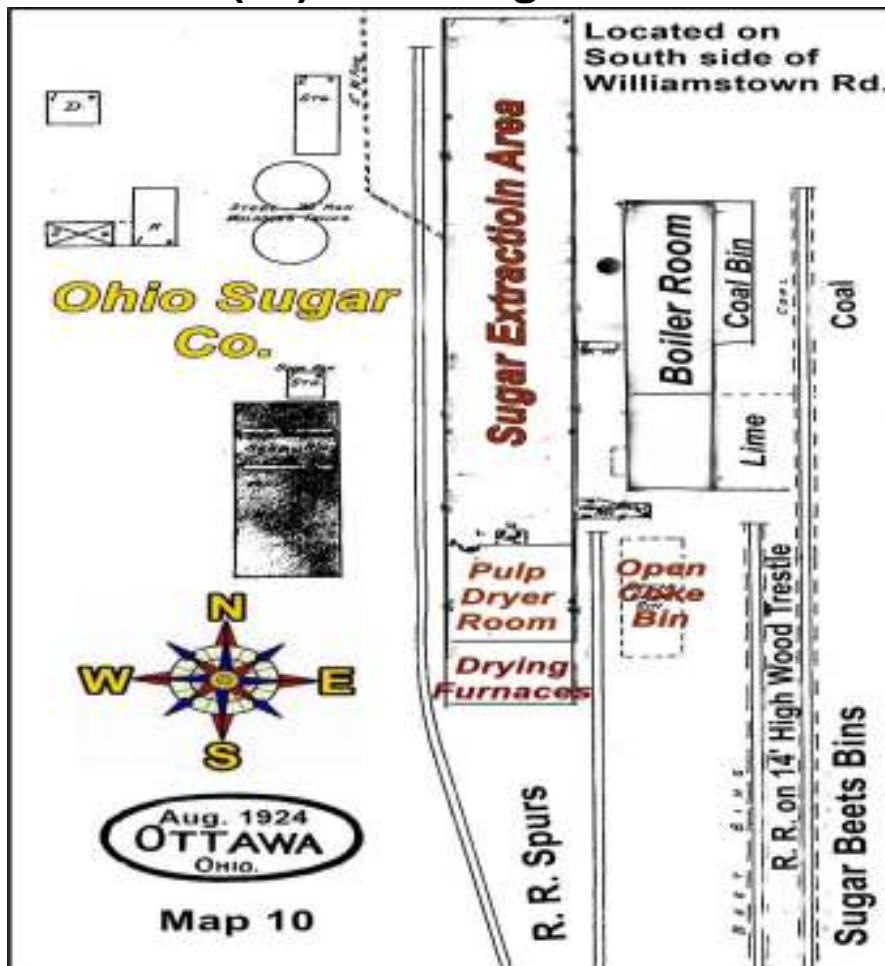
Site 19, 20 - 1924 (Map 9 - E. 4th St.)
(19) Standard Oil Co. of Ohio * (20) H. Williams Lumber Yard



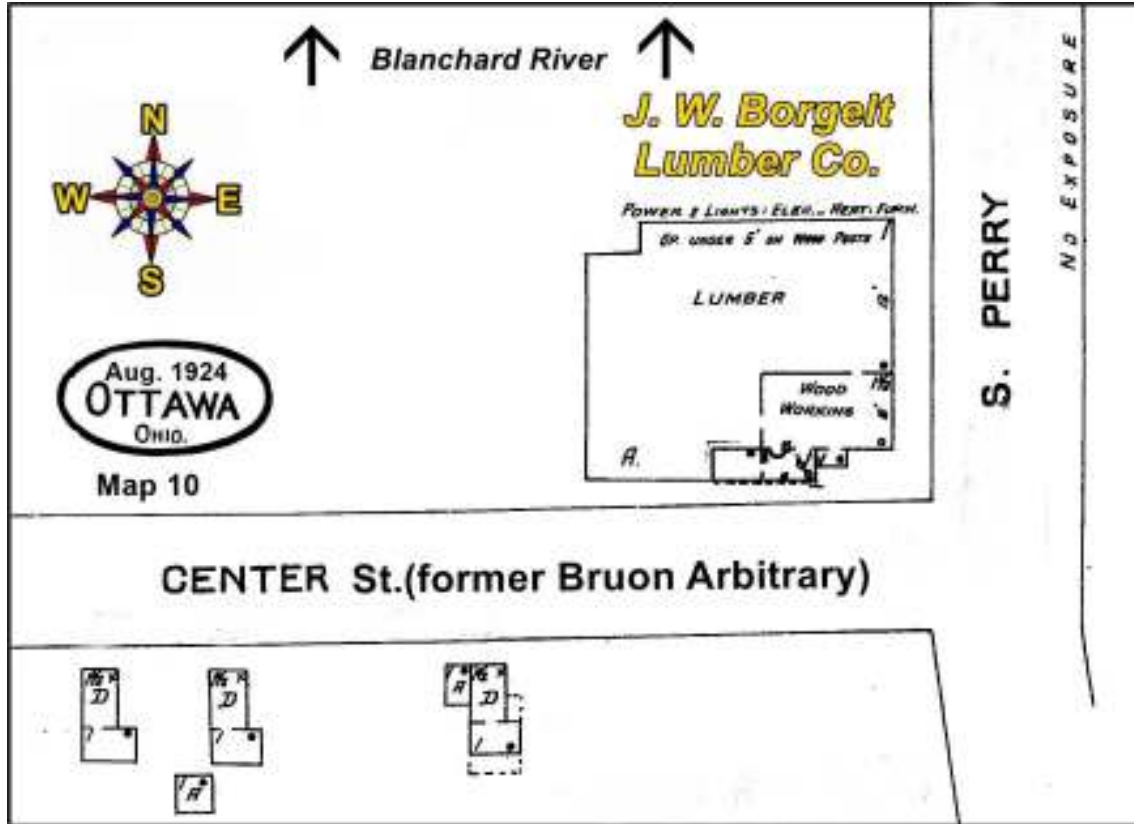
**Site 21 - 1924 (Map 9 - E. 4th St.)
 (21) H. Raabe Bros. Elevator**



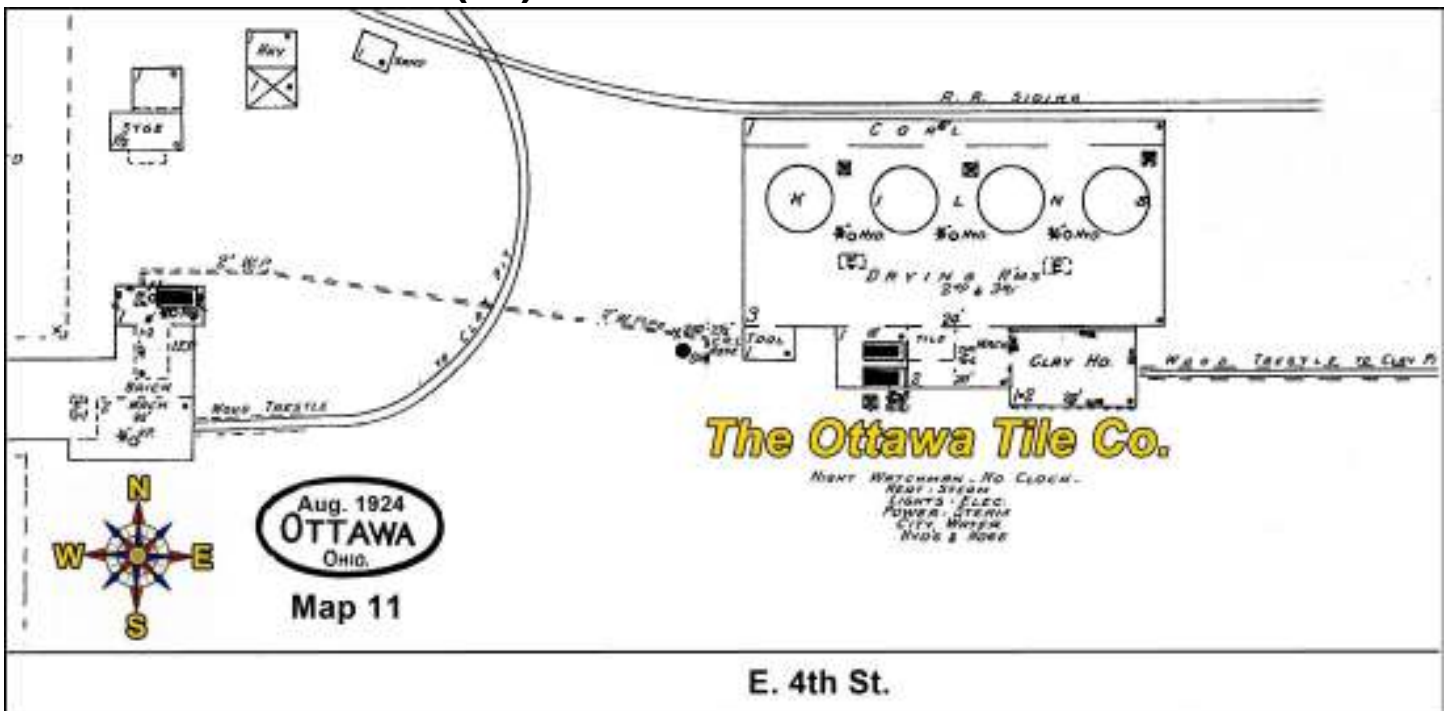
**Site 22 - 1924 (Map 10 - Williamstown Rd.)
 (22) Ohio Sugar Co.**



**Site 23 - 1924 (Map 10 - S. Perry St.)
(23) J. W. Borgelt Lumber Co.**



**Site 24 - 1924 (Map 11 - S. Perry St.)
(24) The Ottawa Tile Co.**



Site 25 - 1924 (Map 11 - E. 4th St.)
(25) Snyder Brick Co.

