

1893 Sanborn Maps - 14 Sites

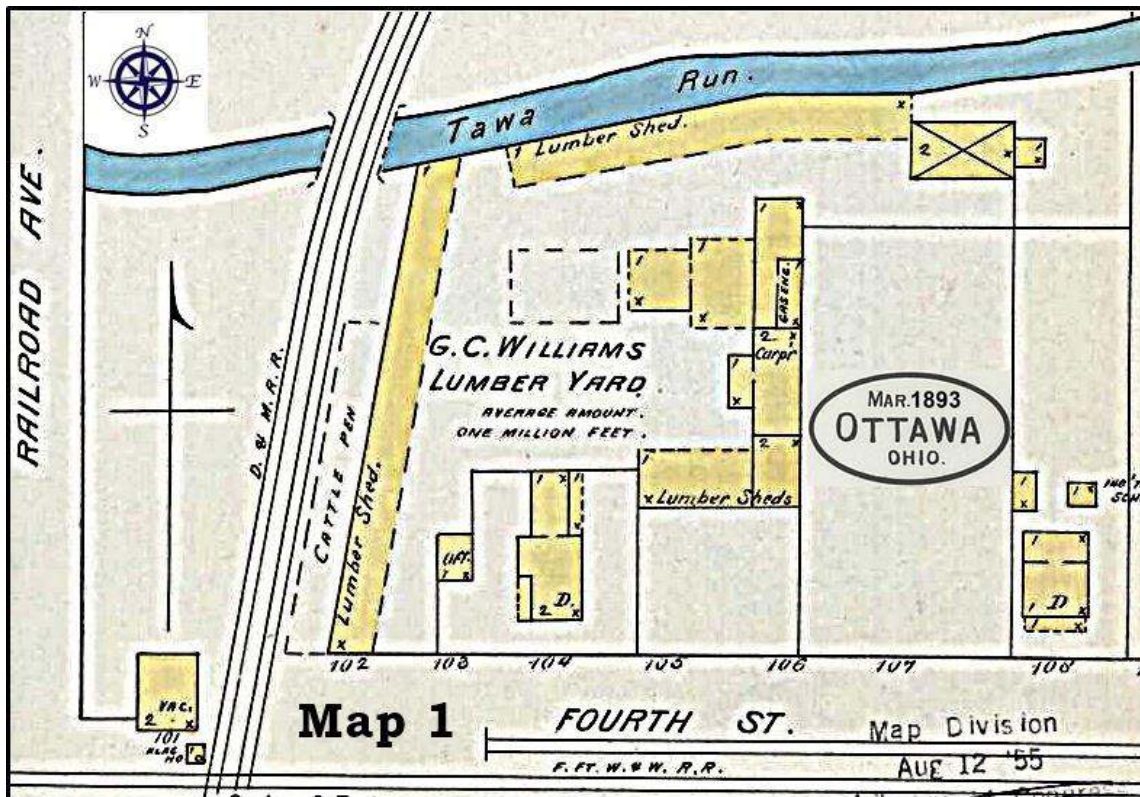
Site 1 - 1893 (Map 1 - Elm St.)

* Ottawa Gate Mfg. *



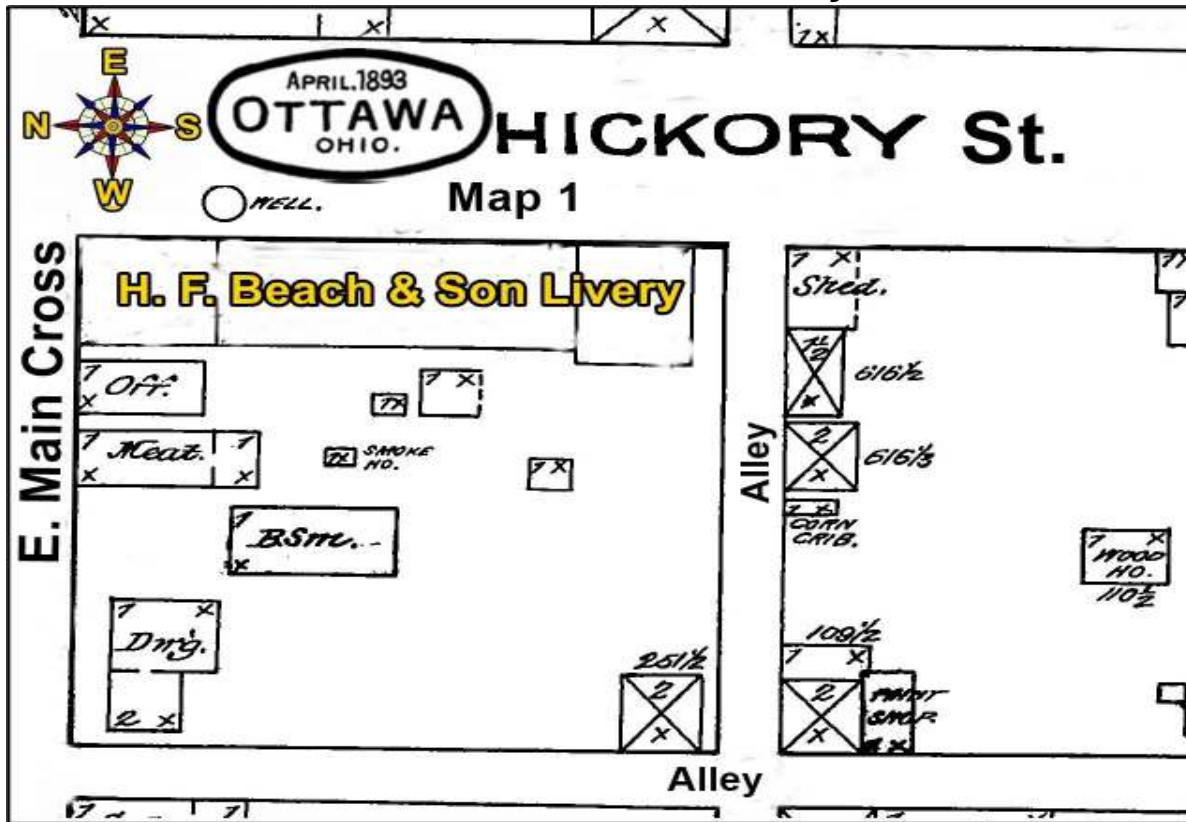
Site 2 - 1893 (Map 1 - 4th St.)

* G. C. Williams Lumber Yard *



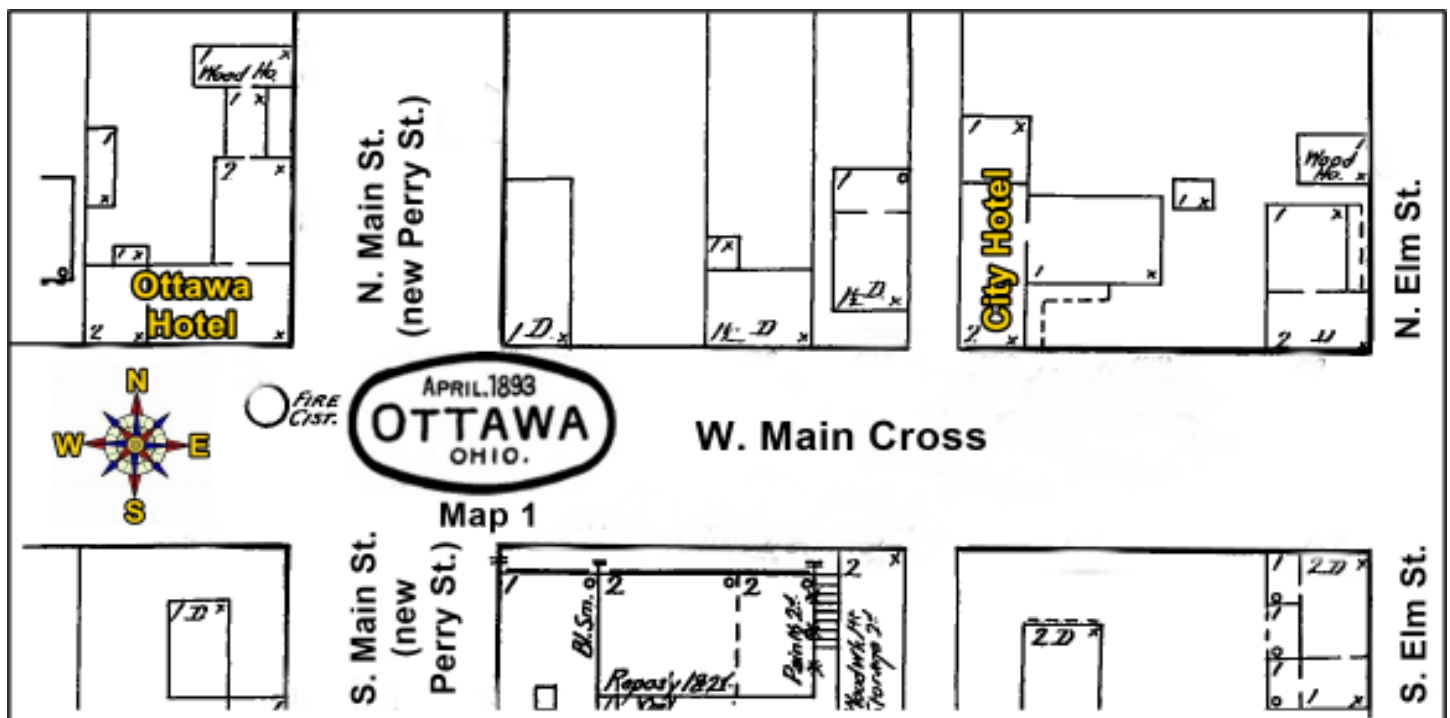
Site 3 - 1893 (Map 1 - E. Main Cross)

* H. F. Beach & Son Livery *



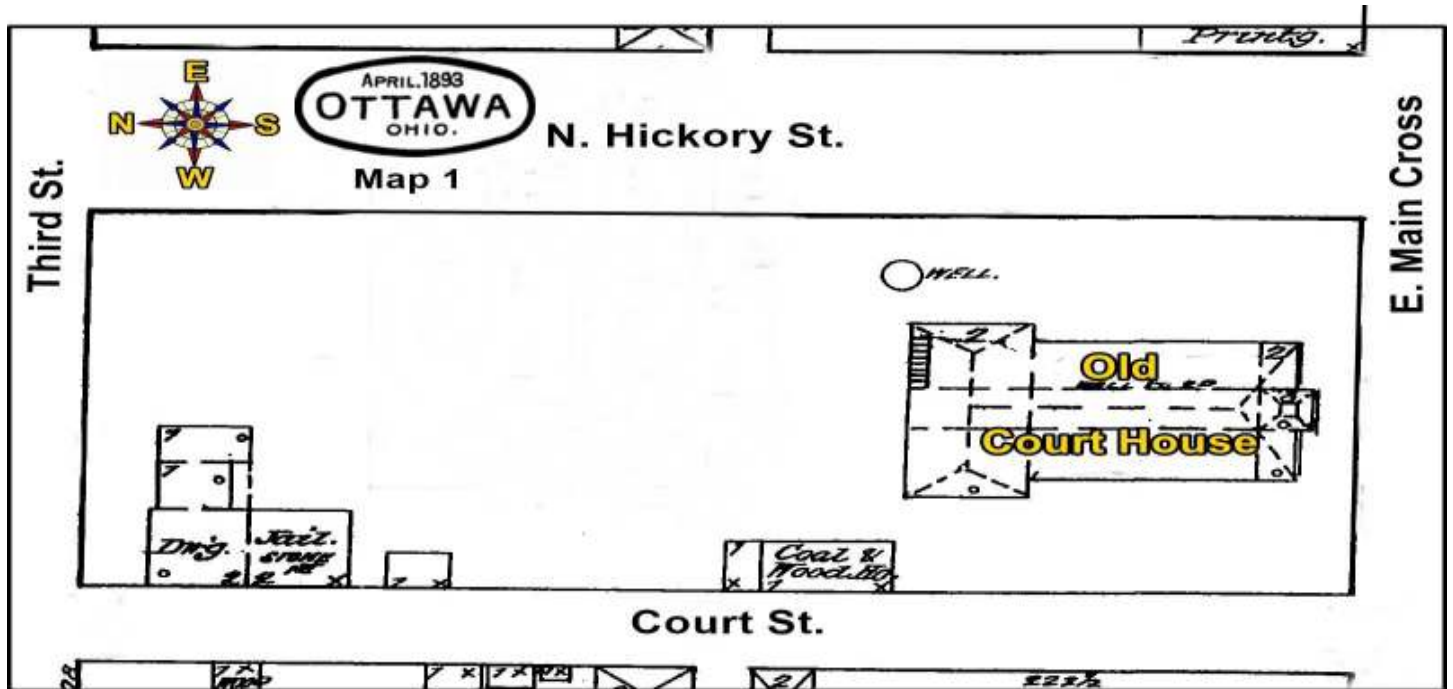
Site 4 - 1893 (Map 1 - E. Main Cross)

* Ottawa Hotel * City Hotel *



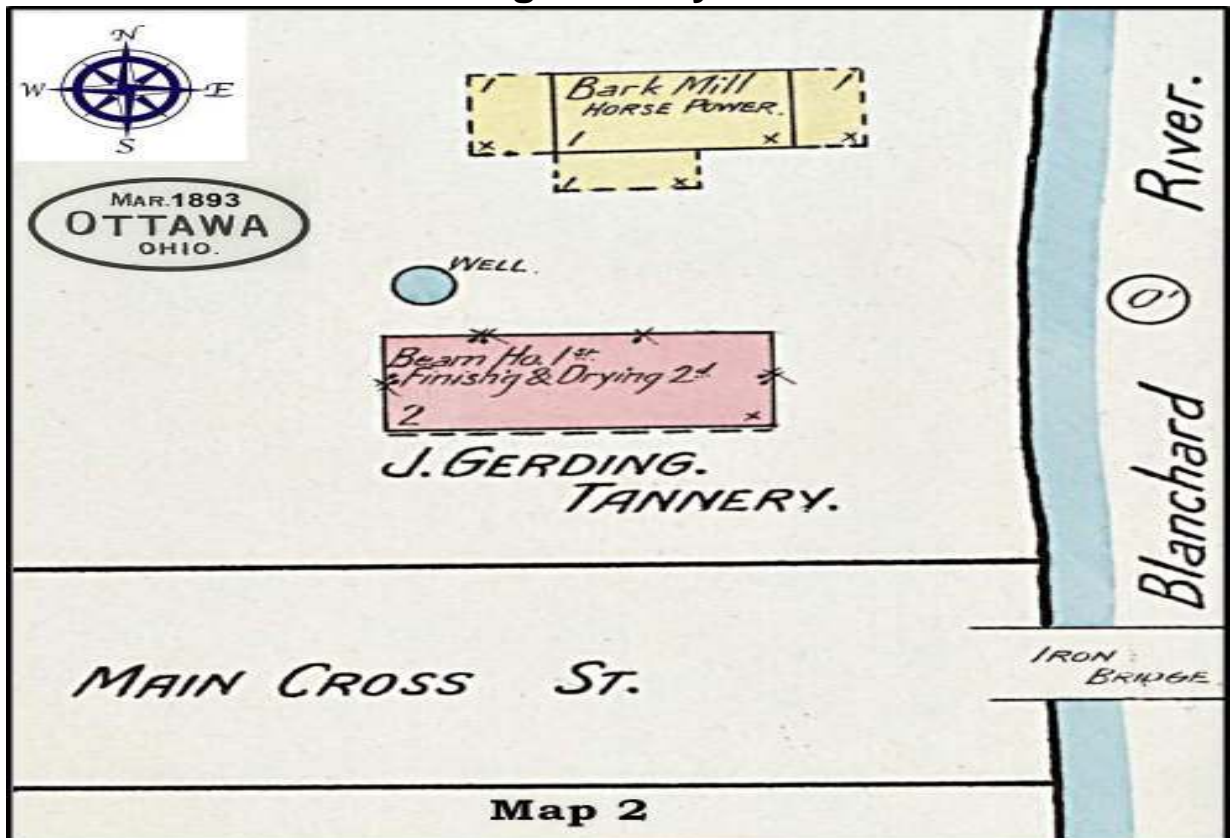
Site 5 - 1893 (Map 1 - E. Main Cross)

* Old Court House *



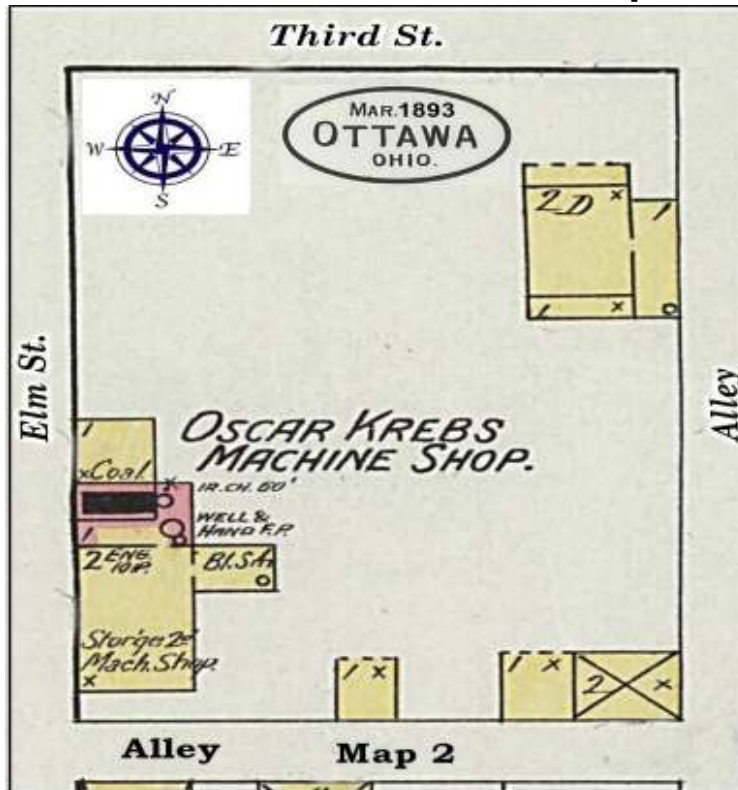
Site 6 - 1893 (Map 2 - Main St. - old Main Cross)

J. Gerding Tannery Main Cross



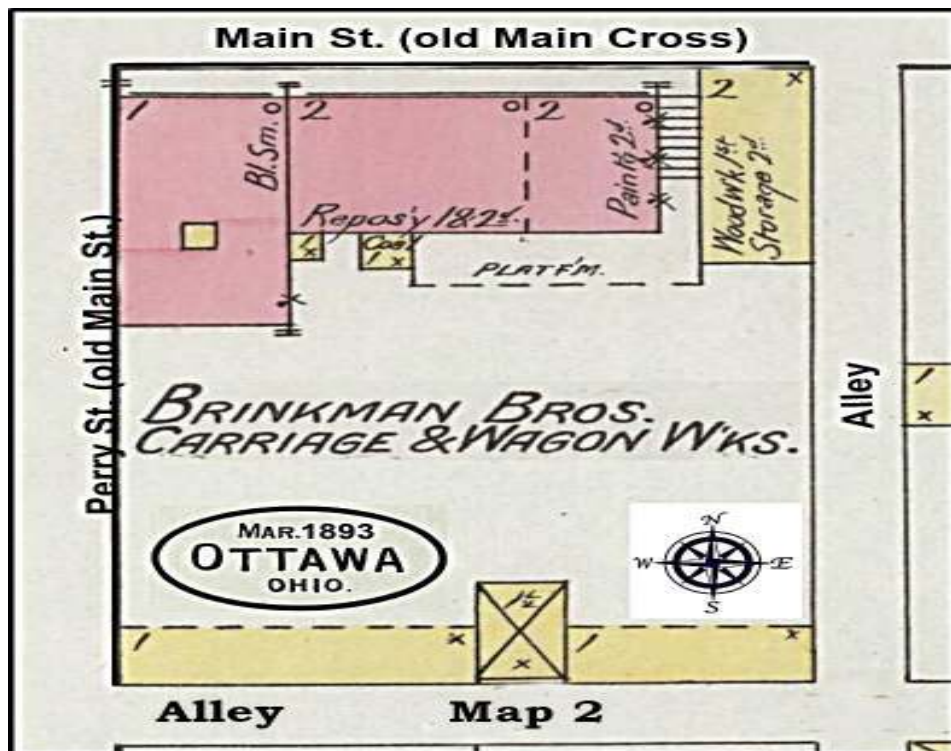
Site 7 - 1893 (Map 2 - Elm St.)

* Oscar Krebs Machine Shop *



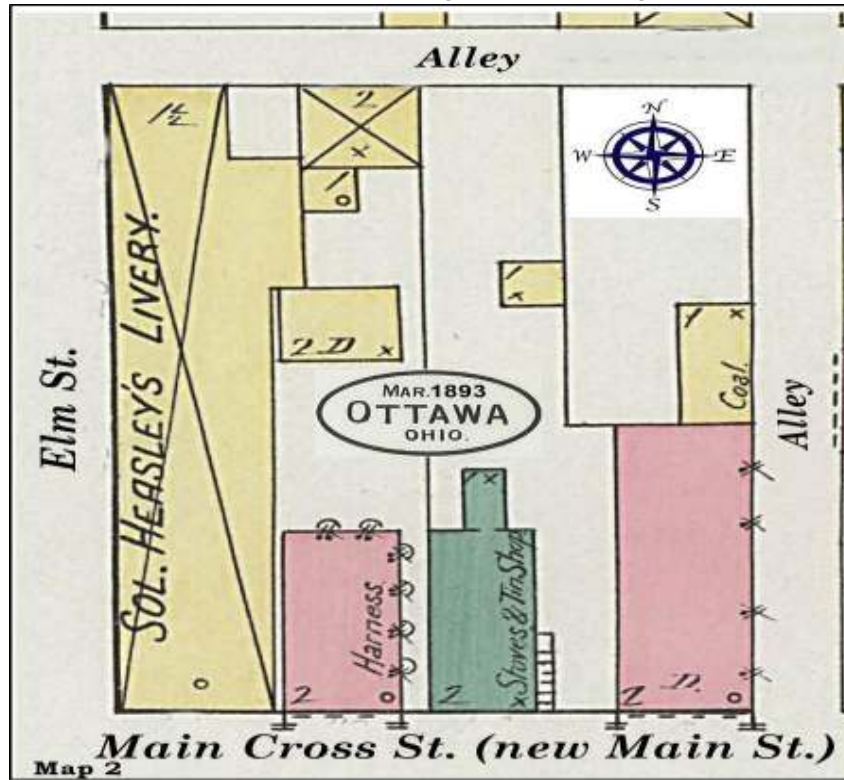
Site 8 - 1893 (Map 2 - Main St. - old Main Cross)

* Brinkman Bros. *



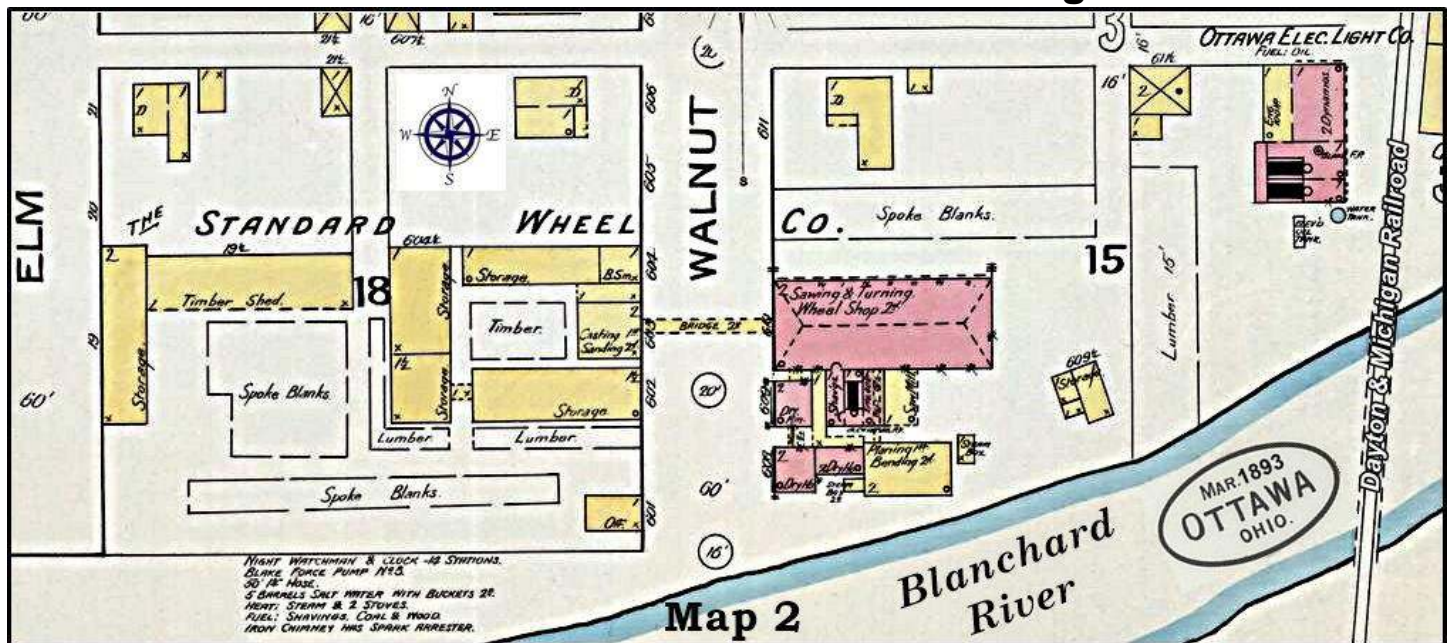
Site 9 - 1893 (Map 2 - Main St. - old Main Cross)

* Sol Heasley's Livery *



Site 10 - 1893 (Map 2 - Elm St.)

* Standard Wheel Co. & Ottawa Electric Light Co. *



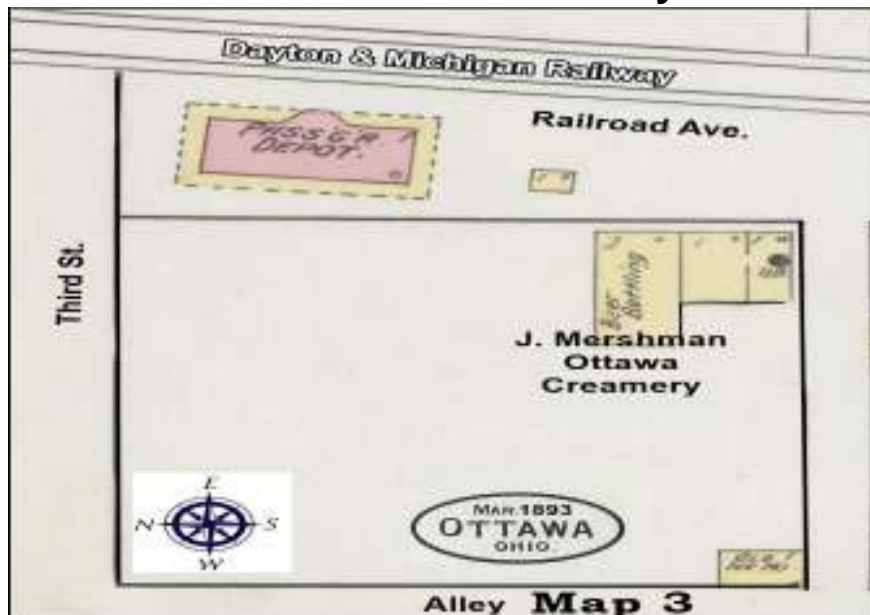
Site 11 - 1893 (Map 3 - 2nd St.)

* H. D. Ream Hamden & Cummings Steam Laundry *



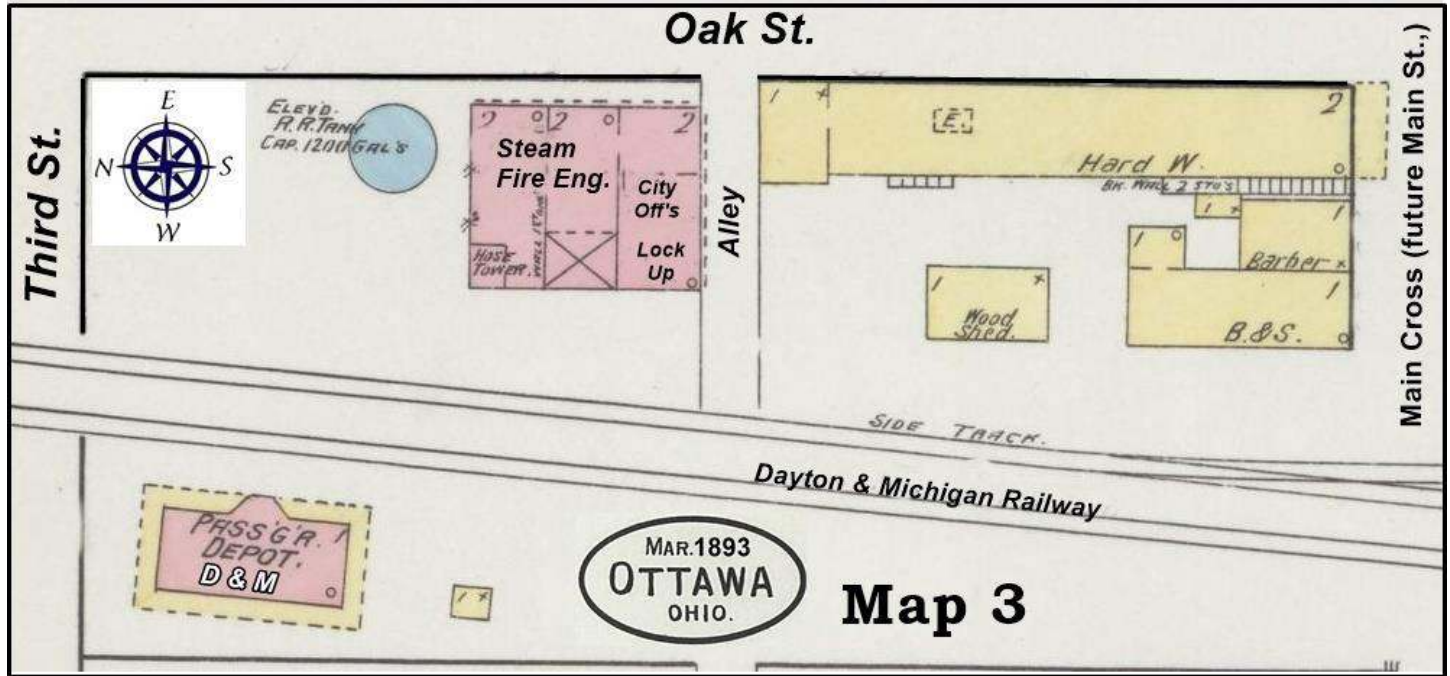
Site 12 - 1893 (Map 3 - Railroad Ave.)

* J. Mershman Creamery *



Site 13 - 1893 (Map 3 - Oak St.)

* Fire Dept. - City Office - Lock Up *



Site 14 - 1893 (Map 3 - Oak St.)

Wm. Annesser Flour Mills

