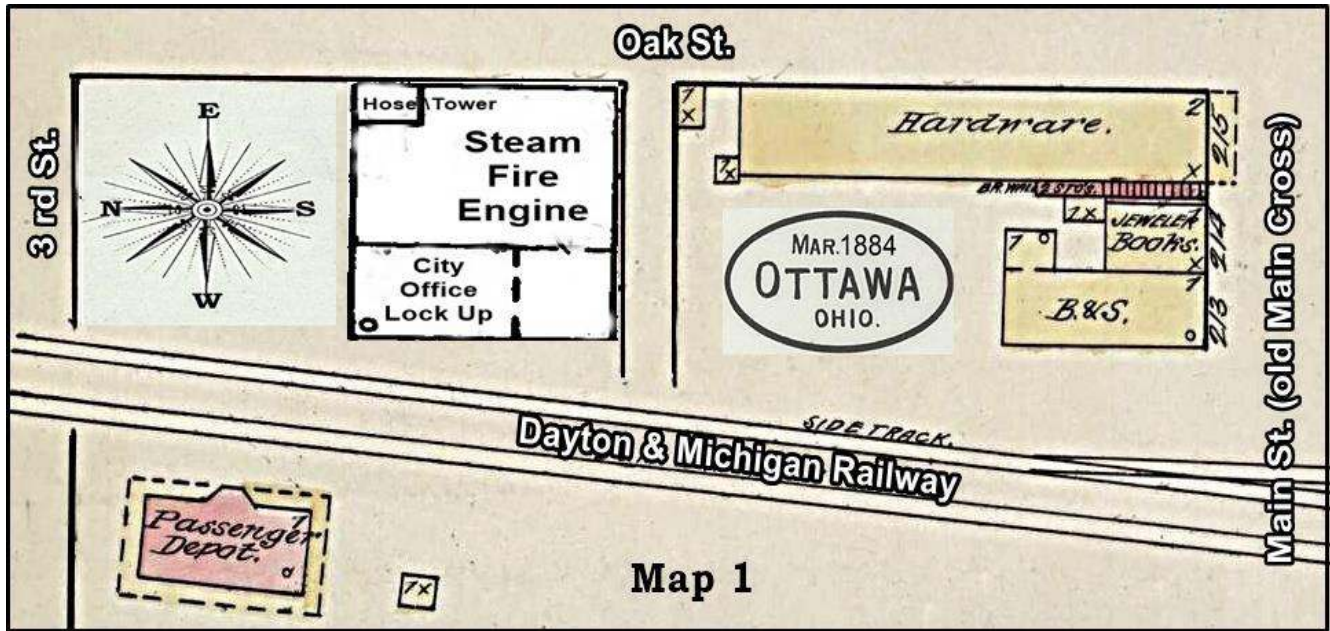


# 1884 Sanborn Maps - 10 Sites

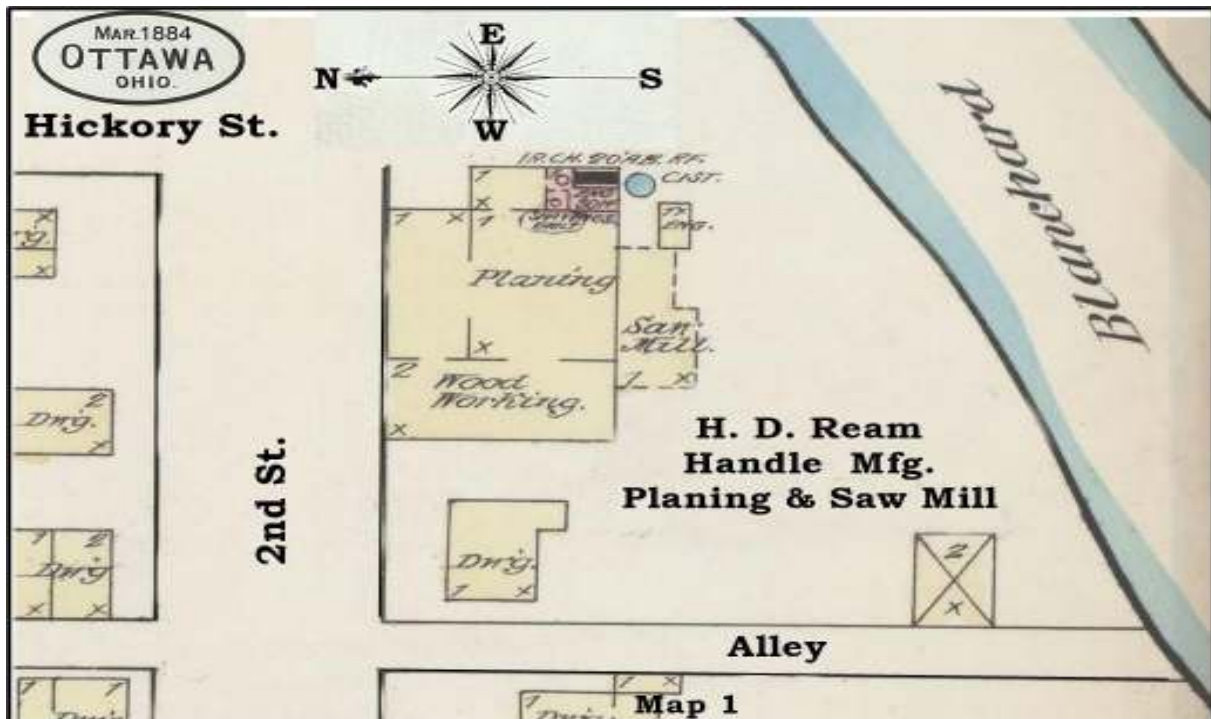
## Site 1 - 1884 (Map 1 - N. Oak St.)

\* Ottawa Fire Dept. - City Office - Lock Up \*



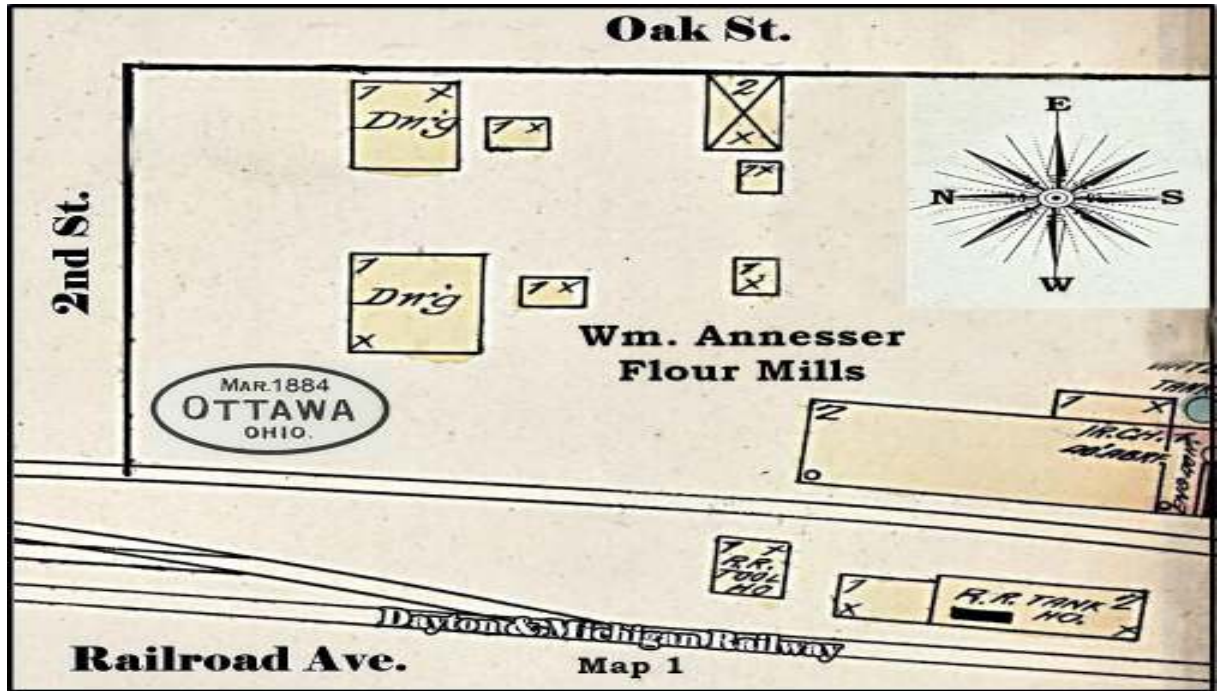
## Site 2 - 1884 (Map 1 - 2<sup>nd</sup> St.)

\* H. D. Ream Handle Mfg. Planing & Saw Mill \*



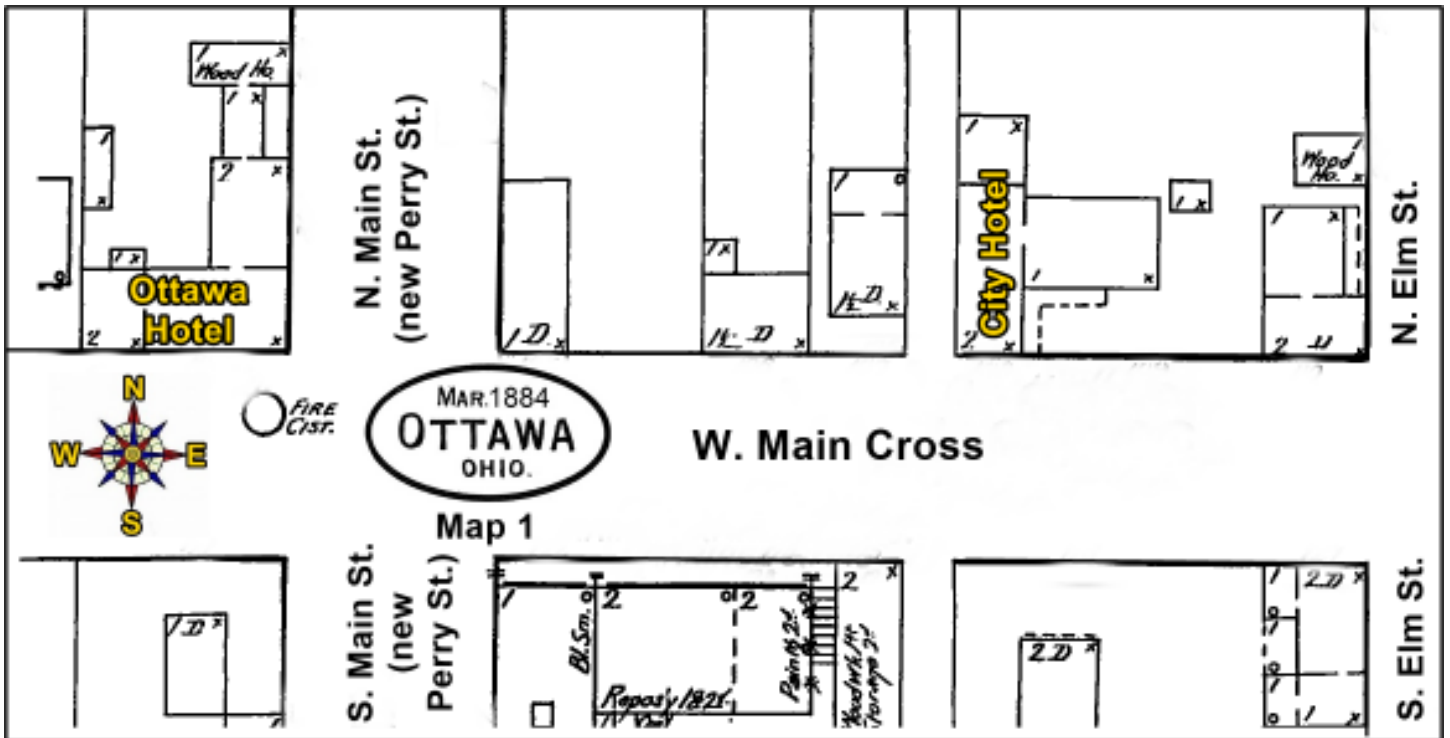
Site 3 - 1884 (Map 1 - Oak St.)

\* Wm. Annesser Flour Mills \*



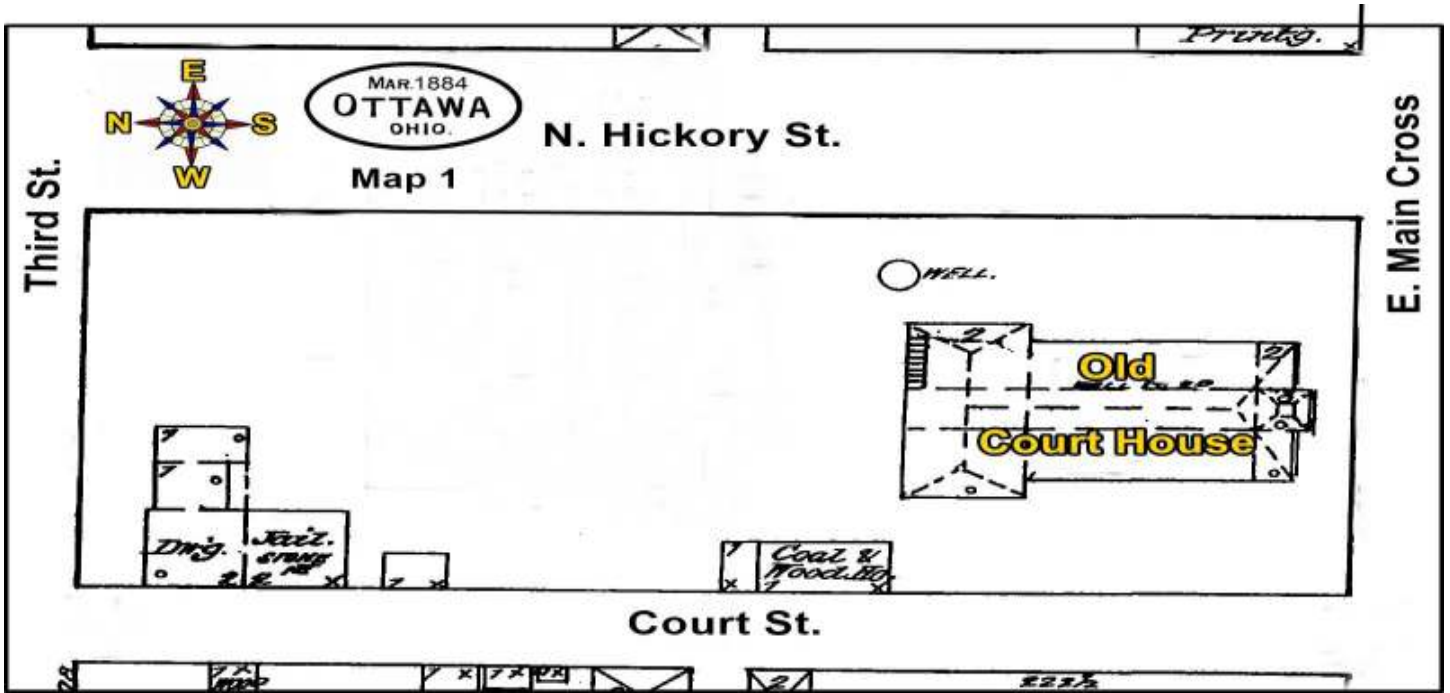
Site 4 - (Map 1 Main Cross)

\* Ottawa Hotel & City Hotel \*



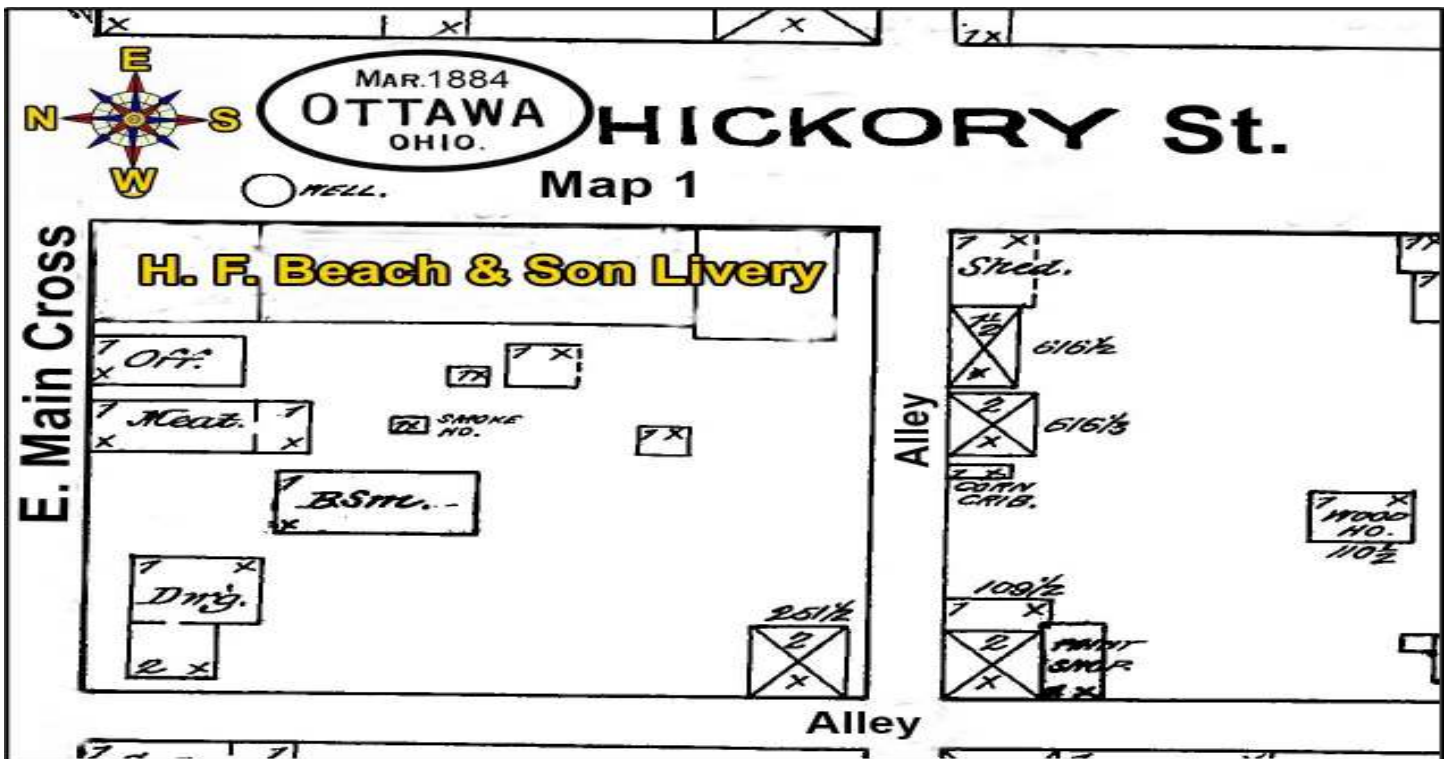
Site 5 - (Map 1 Main Cross)

\* Old Court House \*



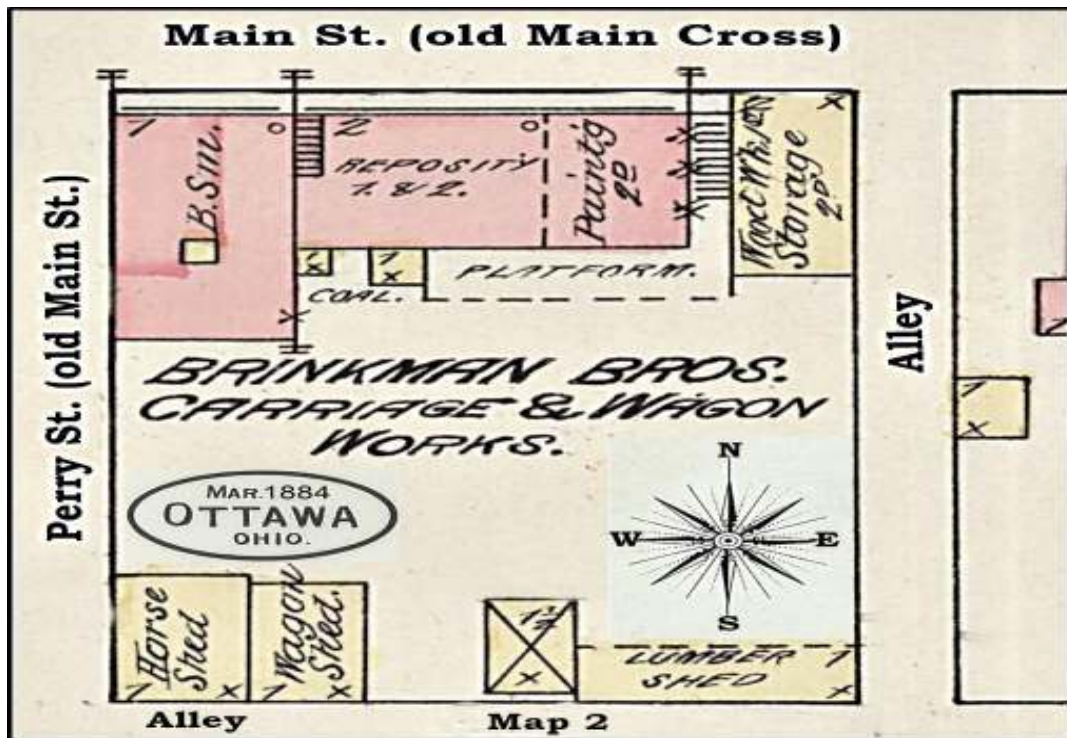
Site 6 - (Map 1 Main Cross)

\* H. F. Beach & Son Livery \*



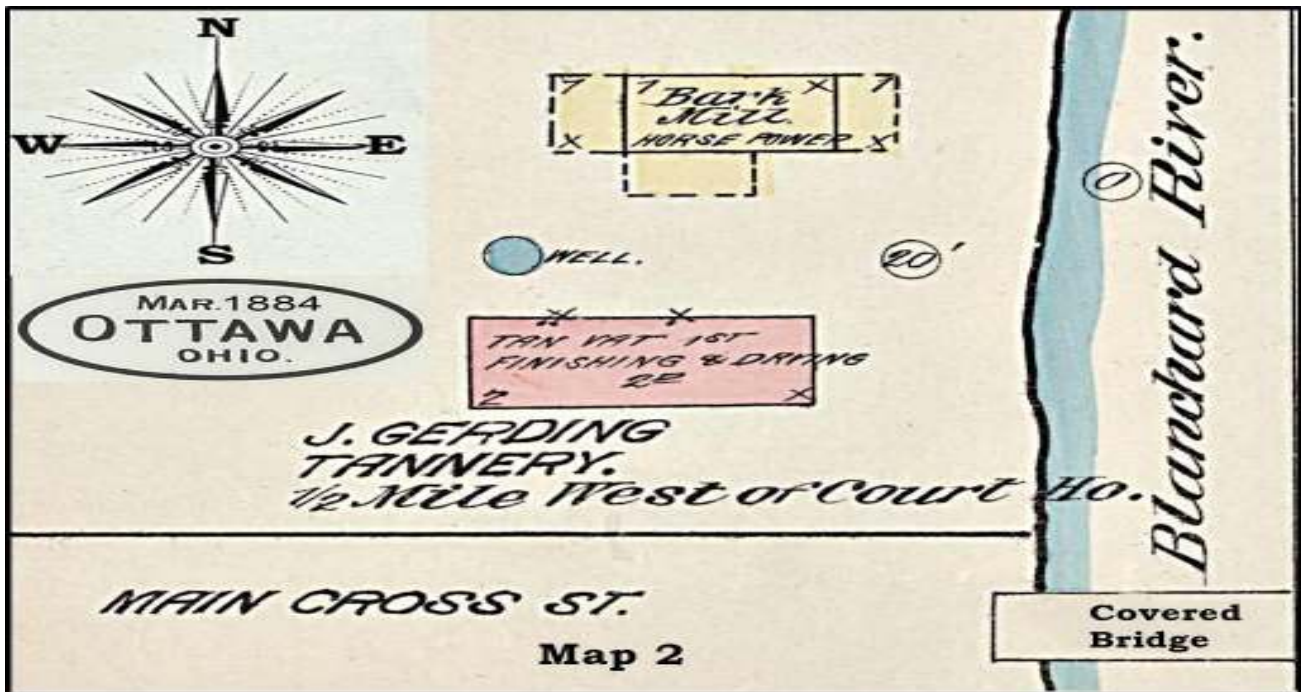
Site 7 - 1884 (Map 2 - Main St. old Main Cross)

\* Brinkman Bro. Carriage & Wagon Works \*



Site 8 - 1884 (Map 2 - Main St. old Main Cross)

\* J. Gerding Tannery \*



Site 9 - 1884 (Map 2 - Elm St.)

\* Ottawa Gate Mfg. \*



Site 10 - 1884 (Map 2 - Walnut St.)

\* Rice Brown Co & Ottawa Wheel Works \*

